

TRAUFIX

READY TO RUN



V2026/05/12 EN

2026 EDITION
MADE IN MEXICO

FDA
Cleared
510(k) K201510

CE

ISO
9001

ISO
13485

ABOUT US

In 2008, Grupo Dipromedic began commercialize the Traufix brand in the Mexican market.

Derived from the quality demands of orthopedic doctors, in 2011 the idea of creating a company that designs and manufactures innovative, safe and reliable implants for traumatology, capable of competing worldwide, was born. This is how the Traufix factory began operations in March 2012, in the city of Leon, Guanajuato, with the intention of being the voice of surgeons in Mexico.

Since the conception of the company, it has been decided that its growth will be based on 4 pillars:

- 1 A solid quality management system, thus obtaining **ISO 9001** and **ISO 13485** certifications, as well as **FDA** and **CE** marking.
- 2 A design and development process, which today allows us to have more than 10 innovative developments per year.
- 3 A continuous reinvestment in cutting edge technologies, it has allowed an evolution in the performance of our implants.
- 4 Continuous training of human resources, always focusing on our collaborators and clients as the center and engine of our organization.

This is how Traufix is today the leading brand in medical device innovation in Mexico, with a firm position in the performance of our implants, which is the spearhead for our internationalization.



Positioning Mexican orthopedics in the world



510 (k)
K201510
Cleared



Chemical properties of stainless steel

Due to the **low carbon content**, 316LS steel is immune to sensitization, a type of **corrosion** that occurs when stainless steel reaches high temperatures.

The increase in **nickel** reduces **magnetism**, improves the **shine** and the finish of the pieces. **Molybdenum** at a higher concentration gives more resistance to **corrosion**.

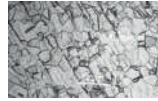
IDENTIFICACIÓN / SAMPLE ID

Element %	316	316L	316LS
Carbon	0.08 máx	0.03 máx	0.030 máx
Manganese	2.00 máx	2.00 máx	2.00 máx
Phosphorus	0.045 máx	0.045 máx	0.025 máx
Sulfur	0.03 máx	0.03 máx	0.010 máx
Silicon	0.75 máx	0.75 máx	0.75 máx
Chromium	16.00 - 18.00	16.00 - 18.00	17.00 - 19.00
Nickel	10.00 - 14.00	10.00 - 14.00	13.00 - 15.00
Molybdenum	2.00 - 3.00	2.25 - 3.00	2.25 α 3.00
Nitrogen	0.10 máx	0.10 máx	0.10 máx
Copper	0.50 máx	0.50 máx	0.50 máx
Hierre	Balance	Balance	Balance

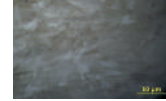
* STEEL STAINLESSRO INOX 316LS
INOX 316LS 4.0 mm x 12.00 mm
CURVA

* COLADA: 039-660306/639-1NO.
DE CONTROL C-0004-20.

Microstructure of 316L



*Microstructure of 316LS



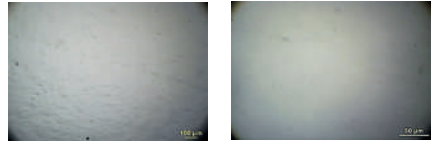
*It is more uniform and free of impurities that affect its mechanical resistance and corrosion.
*Grain size is critical to mechanical properties.

Type	Resistance to corrosion	Hardness	Magnetic
Martensitics	Low	High	YES
Ferritics	Good	Medium low	YES
Austenitics (Here is the 316LS used in Traufix)	Excellent	High	NO

Chromium and nickel give the microscopic austenitic phase characteristic of metal 316

Non-metallic inclusions of stainless steel (Contaminants).

Resultados de prueba / Test Results



Vista / View 100X

Vista / View 500X

316LS metal undergoes an electric arc manufacturing process followed by a vacuum arc process to remove impurities.

Mechanical properties of stainless steel

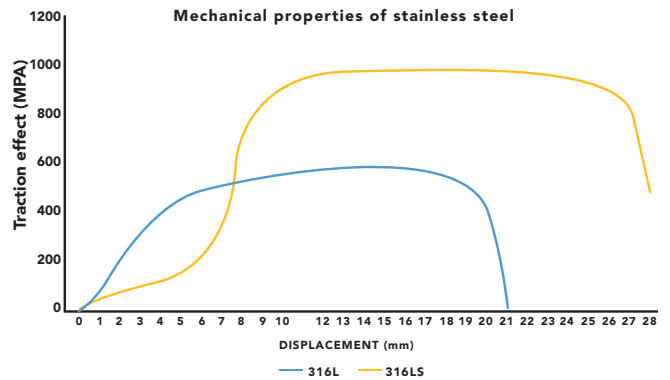
Tipo	Yield stress (Mpa)	Tensile Strength (Mpa)	% of elongation
316	206 min.	206 min.	40 min.
316L	172 min.	172 min.	40 min.
316LS	690 min.	690 min.	12 min.

Yield stress – beginning of deformation– Tensile strength – maximum stress before rupture.



Identificación / Sample ID												
ACERO INOX 316LS SOLERA 4.0mm x 12.00mm CURVA COLADA: 039-660306/639-1 NO. DE CONTROL C-0004-20												
Resistencia a la Tracción/Tensile Strength		Esfuerzo de Cedencia Aproximado/ Approximate yield stress		Elongación 50 mm / 50 mm Elongation	Ancho / Width		Espesor / Thickness		Área inicial/ Initial área		Carga Máxima/ Max Load	
Mpa	psi	Mpa	psi	%	mm	in	mm	in	mm ²	in ²	kgF	lbF
977	14176	892	129375	12	11.93	0.470	4.10	0.161	48.91	0.076	4875	10748

Severidad / Severity

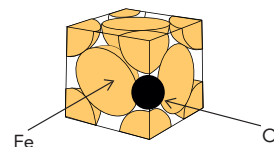


Titanium Alloy 6Al4V ELI ASTM F136

Chemical properties of Titanium

Elemento %	Ti6Al4V (Grade 5)	TiAl4V ELI (Grado 23) ELI: Extra - low Interstitial
Carbon	0.08 máx	0.08 máx
Nitrogen	0.05 máx	0.05 máx
Titanium	resto	Resto
Aluminum	5.50-6.75	5.50-6.50
Vanadium	3.50-4.50	3.50-4.50
Iron	0.30 máx	0.25 máx
Oxigen	0.20 máx	0.13 máx
Hidrogen	0.015 máx	0.012 máx
Ti	Balance	Balance

Grade 23 is the highest purity version of grade 5 by reducing the amount of interstitial elements (O, N, H) and therefore corrosion cracking. It has properties of good strength, light weight, good corrosion resistance and high hardness.



Mechanical properties of Titanium

Grade ASTM	5 Aeronautical, aerospace and chemical industry	23 Use for implants
Tensile Strength (Mpa)	895,00min	860,00min
Elastic Resistance (Mpa)	825,00min	795,00min
Elongation (in 4D, min, %)	10,00min	10,00min
Area reduction (min %)	25,00min	25,00min

Example

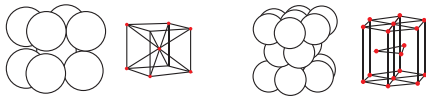
Identificación / Sample ID												
PLACA DE TITANIO 6Al-4V ELI 2mm No. Control: C-00001-20												
Resistencia a la Tracción/Tensile Strength		Esfuerzo de Cedencia Aproximado/ Approximate yield stress		Elongación 50 mm / 50 mm Elongation	Ancho / Width		Espesor / Thickness		Área inicial/ Initial área		Carga Máxima/ Max Load	
Mpa	psi	Mpa	psi	%	mm	in	mm	in	mm ²	in ²	kgF	lbF
985	142920	915	132710	15	12.89	0.507	2.04	0.080	26.30	0.041	2642	5826

Titanium metallography

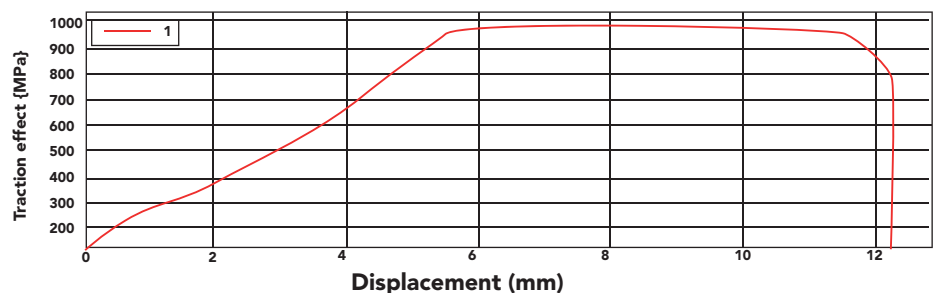
In titanium, an alpha + beta microscopy is sought since it causes a **stability between hardness** (the alpha part) and **ductility** (the beta part). The beta part is the one that allows it to be anodized.

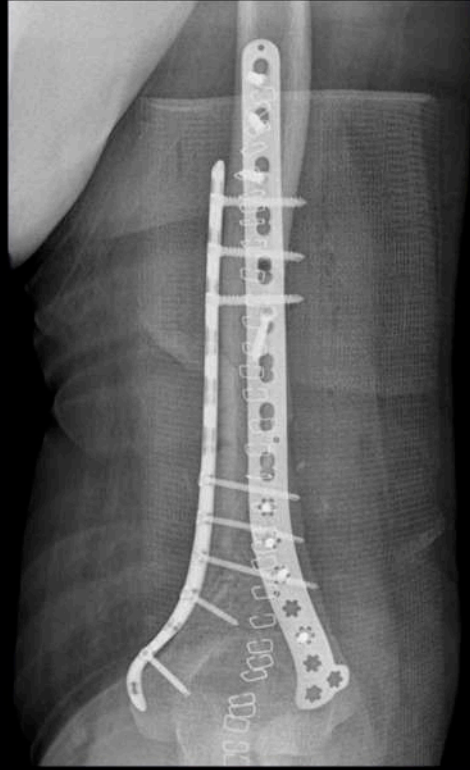
- Beta phase: Cube

-Alpha phase: Hexagonal Compact



Color range





Design by **TRAUFIX**
READY TO RUN

CONTENT

TITANIUM LOCKING PLATES p.07

- ALP TITANIUM SUPERIOR ANTERIOR CLAVICLE PLATE CLAVILOCK
- ALP TITANIUM SUPERIOR ANTERIOR CLAVICLE PLATE WITH LATERAL EXTENSION
- ALP TITANIUM PROXIMAL HUMERUS PLATE PROH-LOCK LARGE
- ALP TITANIUM PROXIMAL HUMERUS PLATE PROH-LOCK
- ALP TITANIUM DISTAL LATERAL HUMERUS PLATE DH-LOCK TELIOS
- ALP TITANIUM DISTAL MEDIAL HUMERUS PLATE DH-LOCK TELIOS
- ALP TITANIUM DISTAL RADIUS PLATE LIONTER
- ALP TITANIUM DISTAL RADIUS PLATE LIONTER S
- ALP TITANIUM DISTAL RADIUS PLATE LIONTER L
- ALP TITANIUM DISTAL TIBIA PLATE TIDIS
- ALP TITANIUM DISTAL TIBIA PLATE TIDIS-II
- ALP TITANIUM ANTEROLATERAL DISTAL TIBIA PLATE TIBI-AL
- ALP TITANIUM DISTAL FIBULA PLATE FIBULE
- ALP TITANIUM PROXIMAL TIBIA PLATE OPTIMUS
- ALP TITANIUM DISTAL FEMUR PLATE CONDYFIX
- ALP TITANIUM PROXIMAL FEMUR PLATE TLP
- 4.5mm ALP NARROW LOCKING PLATE
- 4.5mm ALP BROAD LOCKING PLATE
- 3.5mm ALP LOCKING PLATE
- "T" LOCKING PLATE
- "L" LOCKING PLATE

TITANIUM SCREWS FOR LOCKING PLATES p.12

- 2.5mm TITANIUM CORTEX SCREW, TORX DRIVE
- 2.5mm TITANIUM CORTEX LOCKING SCREW, TORX DRIVE
- 2.5mm TITANIUM CORTEX LOCKING SCREW
- 2.7mm TITANIUM CORTEX LOCKING SCREW
- 3.5mm TITANIUM CORTEX LOCKING SCREW
- 3.5mm TITANIUM CANCELLOUS LOCKING SCREW
- 3.5mm TITANIUM CORTEX SCREW
- 4.5mm TITANIUM CORTEX SCREW
- 5.0mm TITANIUM CORTEX LOCKING SCREW
- 5.0mm TITANIUM CANNULATED CORTEX LOCKING SCREW
- 5.5mm TITANIUM CANCELLOUS LOCKING SCREW
- 7.3mm TITANIUM CANNULATED CANCELLOUS LOCKING SCREW

HIGH SPECIALTY p.15

- SPIDER HTO PLATE HIGH TIBIAL OSTEOTOMY
- HEADLESS COMPRESSION SCREW THS 2.5, 3.5, 4.0, 4.5, 5.0 y 7.0
- HERBERT CANNULATED COMPRESSION SCREW HFS 1.7, 2.3 Y 3.0
- TARFIX

INTRAMEDULLARY TITANIUM NAILS p.20

- TROCHANTERIC NAIL INTRALOCK 9 Y 10mm
- FEMORAL INTRAMEDULLARY NAIL INTRALOCK 9 Y 10mm
- RETROGRADE FEMORAL NAIL INTRALOCK 9,10 Y 11mm
- SHORT RETROGRADE FEMORAL NAIL INTRALOCK 9,10 Y 11mm
- TIBIAL INTRAMEDULLARY NAIL INTRALOCK 8.5 Y 9.5mm
- ELIX PROXIMAL FEMORAL NAIL ANTIROTATION SMALL
- ELIX PROXIMAL FEMORAL NAIL ANTIROTATION
- HELICAL BLADE FOR FEMORAL NAIL ANTIROTATION 10.5mm
- LOCKING PLUG FOR FEMORAL NAIL ANTIROTATION
- LOCKING SCREW FOR INTRAMEDULLARY NAIL INTRALOCK 3.5mm

- LOCKING SCREW FOR INTRAMEDULLARY NAIL INTRALOCK 4.5mm
- SCREW FOR RETROGRADE NAIL INTRALOCK 6.4mm
- SUBTROCHANTERIC LAG SCREW INTRALOCK 6.5mm
- COMPRESSION SCREW FOR RETROGRADE NAIL INTRALOCK 6.4mm
- WASHER 4.5mm A 6.5mm
- END CAP FOR FEMORAL NAIL INTRALOCK
- END CAP FOR TIBIAL NAIL INTRALOCK
- INTRAMEDULLARY NAIL FOR HUMERUS H-FIX SMALL 9mm
- INTRAMEDULLARY NAIL FOR HUMERUS H-FIX LARGE 7 y 8mm
- 4.5 mm LOCKING PIN FOR INTRALOCK FIX INTRAMEDULLARY NAIL (DUOFIX)
- 3.5 mm LOCKING PIN FOR INTRALOCK FIX INTRAMEDULLARY NAIL
- 3.5 mm LOCKING PIN FOR INTRALOCK INTRAMEDULLARY NAIL
- CLOSING CAP FOR INTRAMEDULLARY NAIL HUMERUS H-FIX
- T-FIX INTRAMEDULLARY NAIL FOR THE TIBIA
- 4.3mm LOCKING SCREW FOR T-FIX INTRAMEDULLARY NAIL
- 4.5mm LOCKING SCREW FOR T-FIX INTRAMEDULLARY NAIL
- 5.0mm LOCKING SCREW FOR T-FIX INTRAMEDULLARY NAIL
- END CAP FOR TFIX INTRAMEDULLARY NAIL
- NAIL FOR ANKLE ARTHRODESIS 10, 11 y 12 mm
- 5.0 mm LOCKING SCREW FOT TALOFIX INTRAMEDULLARY NAIL
- END CAP FOR TALOFIX INTRAMEDULLARY NAIL

STAINLESS STEEL OSTEOSYNTHESIS p.29

- PLATES SMALL FRAGMENTS
- PLATES LARGE FRAGMENTS
- DOUBLE WALL TUBE PLATES FOR DHS/DCS
- SCREWS
- WIRES/NAIls

INSTRUMENTAL KIT p.39

- H-FIX EQUIPMENT
- ELIX EQUIPMENT
- TIBIA NAIL KIT
- FEMUR NAIL EQUIPMENT
- T-FIX TIBIA NAIL KIT
- TALOFIX EQUIPMENT
- ALP PLATE FOR DISTAL RADIO
- ALP SMALL FRAGMENTS SET
- ALP LARGE FRAGMENTS SET
- HFS AND THS SCREW EQUIPMENT
- HFS 1.7 KIT
- THS 7.0 KIT
- SPIDER HTO EQUIPMENT
- TARFIX EQUIPMENT
- PELVIS AND ACETABULUM EQUIPMENT
- SMALL FRAGMENT SET
- LARGE FRAGMENTS SET
- DHS / DCS EQUIPMENT
- CANNULATED EQUIPMENT 4.0
- CANNULATED EQUIPMENT 7.0

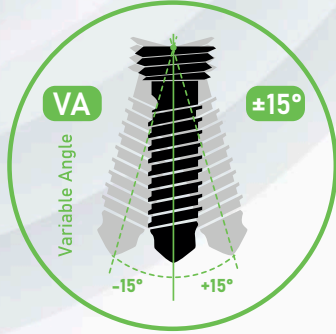
TITANIUM LOCKING PLATES

Advance Locking Plate System | ALP

PERFECT BONE FIT

TITAN

Lionter
RADIO DISTAL



Design by **TRAUFIX**
READY TO RUN



ALP TITANIUM SUPERIOR ANTERIOR CLAVICLE PLATE CLAVILOCK (Code 143 Left / 142 Right)

- 3.5mm TITANIUM CORTEX LOCKING SCREW (Code 106)
- 3.5mm TITANIUM CORTEX SCREW (Code 112)

ALP TITANIUM SUPERIOR ANTERIOR CLAVICLE PLATE WITH LATERAL EXTENSION (Code 141 Left / 140 Right)

- 2.5mm TITANIUM CORTEX LOCKING SCREW (Code 155)
- 3.5mm TITANIUM CORTEX LOCKING SCREW (Code 106)
- 3.5mm TITANIUM CORTEX SCREW (Code 112)

ALP TITANIUM PROXIMAL HUMERUS PLATE TITAN (Code 572 Left / 571 Right) / TITAN LARGE (Code 570 Left / 569 Right)

- 3.5mm TITANIUM CORTEX LOCKING SCREW (Code 106)
- 3.5mm TITANIUM CANCELLOUS LOCKING SCREW (Code 107)
- 3.5mm TITANIUM CORTEX SCREW (Code 112)

**ALP TITANIUM DISTAL RADIUS PLATE LIONTER (Code 149 Left / 148 Right)
ALP TITANIUM DISTAL RADIUS PLATE LIONTER S (Code 149S Left / 148S Right)
ALP TITANIUM DISTAL RADIUS PLATE LIONTER L (Code 149L Left / 148L Right)**

- 2.5mm TITANIUM CORTEX SCREW, TORX DRIVE (Code 154X)
- 2.5mm TITANIUM CORTEX LOCKING SCREW, TORX DRIVE (Code 155X)

**ALP TITANIUM DISTAL MEDIAL HUMERUS PLATE TELIOS (Code 147 Left / 146 Right)
ALP TITANIUM DISTAL LATERAL HUMERUS PLATE TELIOS (Code 145 Left / 144 Right)**

- 2.5mm TITANIUM CORTEX LOCKING SCREW, TORX DRIVE (Code 155X)
- 3.5mm TITANIUM CORTEX LOCKING SCREW (Code 106)
- 3.5mm TITANIUM CORTEX SCREW (Code 112)

3.5mm ALP LOCKING PLATE (Code 198)

- 3.5mm TITANIUM CORTEX LOCKING SCREW (Code 106)
- 3.5mm TITANIUM CORTEX SCREW (Code 112)

ALP TITANIUM DISTAL TIBIA PLATE TIDIS (Code 111 Left / 110 Right)

- 3.5mm TITANIUM CORTEX LOCKING SCREW (Code 106)
- 3.5mm TITANIUM CANCELLOUS LOCKING SCREW (Code 107)
- 3.5mm TITANIUM CORTEX SCREW (Code 112)

ALP TITANIUM DISTAL TIBIA PLATE TIDIS-II (Code 165 Left / 164 Right)

- 3.5mm TITANIUM CORTEX LOCKING SCREW (Code 106)
- 3.5mm TITANIUM CANCELLOUS LOCKING SCREW (Code 107)
- 3.5mm TITANIUM CORTEX SCREW (Code 112)

ALP TITANIUM DISTAL FIBULA PLATE FIBULE (Code 234 Left / 233 Right)

- 2.5mm TITANIUM CORTEX LOCKING SCREW (Code 155)
- 2.7mm TITANIUM CORTEX LOCKING SCREW (Code 170)
- 3.5mm TITANIUM CORTEX LOCKING SCREW (Code 106)
- 3.5mm TITANIUM CORTEX SCREW (Code 112)

ALP TITANIUM PLATE FOR ANTEROLATERAL DISTAL TIBIA TIBI-AL (Code 614 Left / 613 Right)

- 3.5mm TITANIUM CORTEX LOCKING SCREW (Code 106)
- 3.5mm TITANIUM CANCELLOUS LOCKING SCREW (Code 107)
- 3.5mm TITANIUM CORTEX SCREW (Code 112)
- 2.7mm TITANIUM CORTEX LOCKING SCREW (Code 170)

ALP TITANIUM PROXIMAL TIBIA PLATE OPTIMUS (Code 153 Left / 152 Right)

- 4.5mm TITANIUM CORTEX SCREW (Code 126)
- 5.0mm TITANIUM CORTEX LOCKING SCREW (Code 108)
- 5.5mm TITANIUM CANCELLOUS LOCKING SCREW (Code 109)

ALP TITANIUM DISTAL FEMUR PLATE CONDYFIX (Code 120 Left / 119 Right)

- 4.5mm TITANIUM CORTEX SCREW (Code 126)
- 5.0mm TITANIUM CORTEX LOCKING SCREW (Code 108)
- 5.5mm TITANIUM CANCELLOUS LOCKING SCREW (Code 109)

ALP TITANIUM PROXIMAL FEMUR PLATE TLP (Code 151 Left / 150 Right)

- 4.5mm TITANIUM CORTEX SCREW (Code 126)
- 5.0mm TITANIUM CORTEX LOCKING SCREW (Code 108)
- 5.5mm TITANIUM CANCELLOUS LOCKING SCREW (Code 109)
- 7.3mm TITANIUM CANNULATED CANCELLOUS LOCKING SCREW (Code 156)

4.5mm ALP NARROW LOCKING PLATE (Code 199)

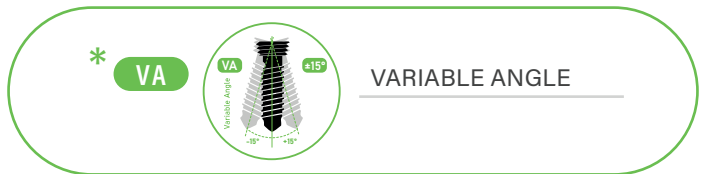
- 4.5mm TITANIUM CORTEX SCREW (Code 126)
- 5.0mm TITANIUM CORTEX LOCKING SCREW (Code 108)

4.5mm ALP BROAD LOCKING PLATE (Code 200)

- 4.5mm TITANIUM CORTEX SCREW (Code 126)
- 5.0mm TITANIUM CORTEX LOCKING SCREW (Code 108)

"T" LOCKING PLATE (Code 256) | "L" LOCKING PLATE (Code 258 Left / 257 Right)

- 4.5mm TITANIUM CORTEX SCREW (Code 126)
- 5.0mm TITANIUM CORTEX LOCKING SCREW (Code 108)
- 5.5mm TITANIUM CANCELLOUS LOCKING SCREW (Code 109)





ALP TITANIUM DISTAL RADIUS PLATE LIONTER



LEFT		RIGHT	
Code	Holes	Code	Holes
149.03	3 Holes	148.03	3 Holes
149.05	5 Holes	148.05	5 Holes
149.07	7 Holes	148.07	7 Holes

Made in Titanium Alloy
Ti6Al4V ELI, ASTM F136,
used in surgical implants



Low distal profile 0.8mm



ALP TITANIUM DISTAL RADIUS PLATE LIONTER S



LEFT		RIGHT	
Code	Holes	Code	Holes
149.03S	3 Holes	148.03S	3 Holes
149.05S	5 Holes	148.05S	5 Holes
149.07S	7 Holes	148.07S	7 Holes

Multidirectional ($\pm 15^\circ$) and stable angle fixation



ALP TITANIUM DISTAL RADIUS PLATE LIONTER L

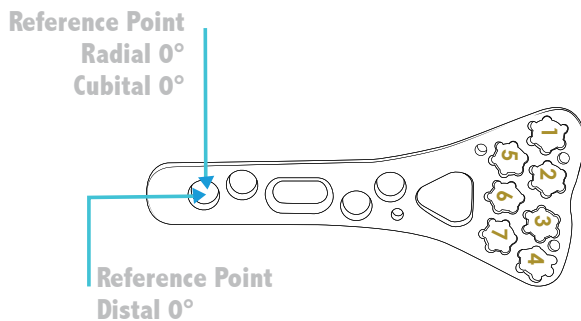


LEFT		RIGHT	
Code	Holes	Code	Holes
149.08L	8 Holes	148.08L	8 Holes
149.10L	10 Holes	148.10L	10 Holes
149.12L	12 Holes	148.12L	12 Holes

3.5mm ALP LOCKING PLATE



Code	Holes
198.05	5 Holes
198.06	6 Holes
198.07	7 Holes
198.08	8 Holes
198.10	10 Holes
198.12	12 Holes



TITANIUM LOCKING PLATES



TITAN



ALP TITANIUM PROXIMAL HUMERUS PLATE TITAN

LEFT		RIGHT	
Code	Holes	Code	Holes
572.03	3 Holes	571.03	3 Holes
572.05	5 Holes	571.05	5 Holes



TITAN



ALP TITANIUM PROXIMAL HUMERUS PLATE TITAN LARGE

LEFT		RIGHT	
Code	Holes	Code	Holes
570.04	4 Holes	569.04	4 Holes
570.06	6 Holes	569.06	6 Holes
570.08	8 Holes	569.08	8 Holes
570.10	10 Holes	569.10	10 Holes



TELIOS



ALP TITANIUM DISTAL LATERAL HUMERUS PLATE TELIOS

LEFT		RIGHT	
Code	Holes	Code	Holes
145.03	3 Holes	144.03	3 Holes
145.05	5 Holes	144.05	5 Holes
145.07	7 Holes	144.07	7 Holes
145.09	9 Holes	144.09	9 Holes



TELIOS



ALP TITANIUM DISTAL MEDIAL HUMERUS PLATE TELIOS

LEFT		RIGHT	
Code	Holes	Code	Holes
147.02	2 Holes	146.02	2 Holes
147.04	4 Holes	146.04	4 Holes
147.06	6 Holes	146.06	6 Holes
147.08	8 Holes	146.08	8 Holes



ClaviLock CE



ALP TITANIUM SUPERIOR ANTERIOR CLAVICLE PLATE CLAVILOCK

LEFT		RIGHT	
Code	Holes	Code	Holes
143.06	6 Holes	142.06	6 Holes
143.08	8 Holes	142.08	8 Holes
143.10	10 Holes	142.10	10 Holes



ClaviLock CE



ALP TITANIUM SUPERIOR ANTERIOR CLAVICLE PLATE WITH LATERAL EXTENSION

LEFT		RIGHT	
Code	Holes	Code	Holes
141.04	4 Holes	140.04	4 Holes
141.05	5 Holes	140.05	5 Holes
141.06	6 Holes	140.06	6 Holes

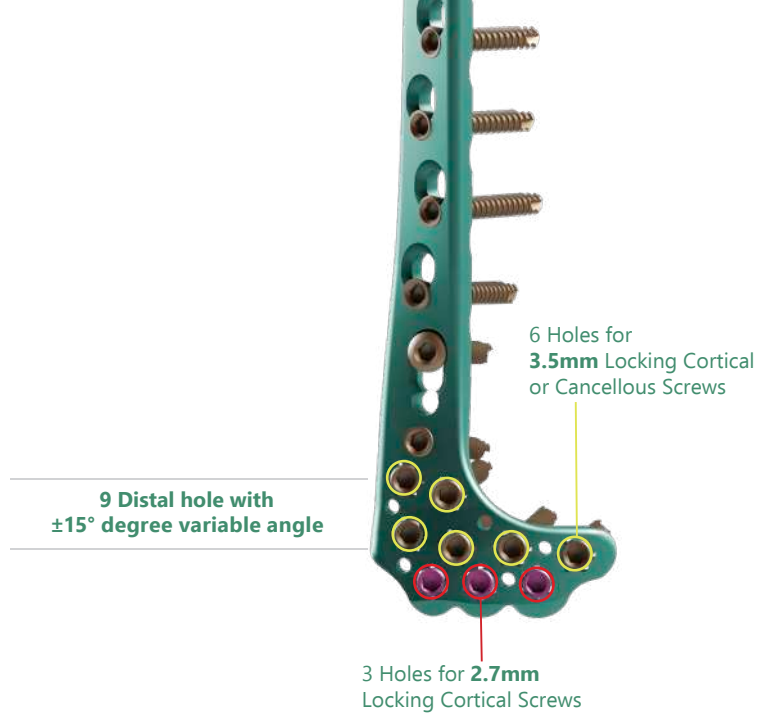
TITANIUM LOCKING PLATES



Tibi-AL

ALP TITANIUM PLATE FOR ANTEROLATERAL DISTAL TIBIA TIBI-AL

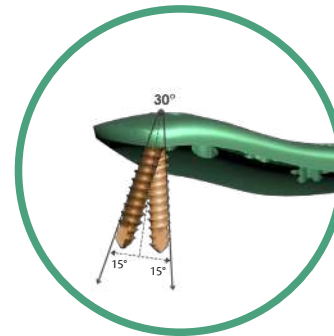
LEFT		RIGHT	
Code	Holes	Code	Holes
614.05	5 Holes	613.05	5 Holes
614.07	7 Holes	613.07	7 Holes
614.09	9 Holes	613.09	9 Holes
614.11	11 Holes	613.11	11 Holes
614.13	13 Holes	613.13	13 Holes



Tidis-II

ALP TITANIUM DISTAL TIBIA PLATE TIDIS-II

LEFT		RIGHT	
Code	Holes	Code	Holes
165.05	5 Holes	164.05	5 Holes
165.07	7 Holes	164.07	7 Holes
165.09	9 Holes	164.09	9 Holes
165.11	11 Holes	164.11	11 Holes
165.13	13 Holes	164.13	13 Holes



Distal hole towards the tibial malleolus with 30° degree inclination + 15° degree polyaxial.

Superficial Low Contact :
Notches at the top of the plane allow blood vessel circulation.



FIBULE

ALP TITANIUM DISTAL FIBULA PLATE FIBULE

LEFT		RIGHT	
Code	Holes	Code	Holes
234.03	3 Holes	233.03	3 Holes
234.04	4 Holes	233.04	4 Holes
234.05	5 Holes	233.05	5 Holes
234.06	6 Holes	233.06	6 Holes
234.07	7 Holes	233.07	7 Holes
234.09	9 Holes	233.09	9 Holes
234.11	11 Holes	233.11	11 Holes

Tidis

ALP TITANIUM DISTAL TIBIA PLATE TIDIS

LEFT		RIGHT	
Code	Holes	Code	Holes
111.05	5 Holes	110.05	5 Holes
111.07	7 Holes	110.07	7 Holes
111.09	9 Holes	110.09	9 Holes
111.11	11 Holes	110.11	11 Holes
111.13	13 Holes	110.13	13 Holes



TITANIUM LOCKING PLATES



4.5mm ALP NARROW LOCKING PLATE

Code	Holes
199.06	6 Holes
199.07	7 Holes
199.08	8 Holes
199.09	9 Holes
199.10	10 Holes
199.12	12 Holes
199.14	14 Holes



Optimus 510(k) K201510 Cleared

ALP TITANIUM PROXIMAL TIBIA PLATE OPTIMUS

LEFT		RIGHT	
Code	Holes	Code	Holes
153.04	4 Holes	152.04	4 Holes
153.06	6 Holes	152.06	6 Holes
153.08	8 Holes	152.08	8 Holes
153.10	10 Holes	152.10	10 Holes
153.12	12 Holes	152.12	12 Holes
153.14	14 Holes	152.14	14 Holes



"T" LOCKING PLATE

Code	Holes
256.03	3 Holes
256.04	4 Holes
256.05	5 Holes
256.06	6 Holes
256.07	7 Holes
256.08	8 Holes



"L" LOCKING PLATE

LEFT		RIGHT	
Code	Holes	Code	Holes
258.03	3 Holes	257.03	3 Holes
258.04	4 Holes	257.04	4 Holes
258.05	5 Holes	257.05	5 Holes
258.06	6 Holes	257.06	6 Holes
258.07	7 Holes	257.07	7 Holes
258.08	8 Holes	257.08	8 Holes



Condyfix CE

**ALP TITANIUM DISTAL FEMUR
PLATE CONDYFIX**

LEFT		RIGHT	
Code	Holes	Code	Holes
120.06	6 Holes	119.06	6 Holes
120.08	8 Holes	119.08	8 Holes
120.10	10 Holes	119.10	10 Holes
120.12	12 Holes	119.12	12 Holes
120.14	14 Holes	119.14	14 Holes



TLP CE FDA 510(k)
k201510
Cleared

**ALP TITANIUM PROXIMAL FEMUR
PLATE TLP**

LEFT		RIGHT	
Code	Holes	Code	Holes
151.04	4 Holes	150.04	4 Holes
151.06	6 Holes	150.06	6 Holes
151.08	8 Holes	150.08	8 Holes
151.10	10 Holes	150.10	10 Holes
151.12	12 Holes	150.12	12 Holes
151.14	14 Holes	150.14	14 Holes



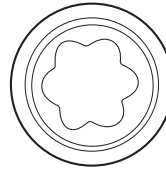
**4.5mm ALP BROAD
LOCKING PLATE**

Code	Holes
200.06	6 Holes
200.07	7 Holes
200.08	8 Holes
200.09	9 Holes
200.10C	10 Holes
200.12C	12 Holes
200.14C	14 Holes



**2.5mm TITANIUM CORTEX SCREW,
TORX DRIVE**

Code	Measure	Code	Measure
154.08X	2.5x08mm	154.20X	2.5x20mm
154.10X	2.5x10mm	154.22X	2.5x22mm
154.12X	2.5x12mm	154.24X	2.5x24mm
154.14X	2.5x14mm	154.26X	2.5x26mm
154.16X	2.5x16mm	154.28X	2.5x28mm
154.18X	2.5x18mm	154.30X	2.5x30mm

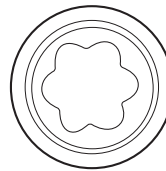


Torx type Star Drive head



**2.5mm TITANIUM CORTEX LOCKING
SCREW, TORX DRIVE**

Code	Measure	Code	Measure
155.08X	2.5x08mm	155.20X	2.5x20mm
155.10X	2.5x10mm	155.22X	2.5x22mm
155.12X	2.5x12mm	155.24X	2.5x24mm
155.14X	2.5x14mm	155.26X	2.5x26mm
155.16X	2.5x16mm	155.28X	2.5x28mm
155.18X	2.5x18mm	155.30X	2.5x30mm



Torx type Star Drive head



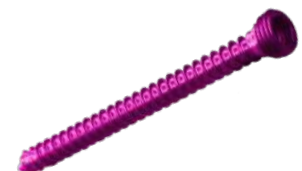
**2.5 mm TITANIUM CORTEX
LOCKING SCREW**

Code	Measure	Code	Measure
155.08	2.5x08mm	155.22	2.5x22mm
155.10	2.5x10mm	155.24	2.5x24mm
155.12	2.5x12mm	155.26	2.5x26mm
155.14	2.5x14mm	155.28	2.5x28mm
155.16	2.5x16mm	155.30	2.5x30mm
155.18	2.5x18mm		
155.20	2.5x20mm		



2.7mm TITANIUM CORTEX LOCKING SCREW

Code	Measure	Code	Measure	Code	Measure
170.06	2.7x06mm	170.24	2.7x24mm	170.42	2.7x42mm
170.08	2.7x08mm	170.26	2.7x26mm	170.44	2.7x44mm
170.10	2.7x10mm	170.28	2.7x28mm	170.46	2.7x46mm
170.12	2.7x12mm	170.30	2.7x30mm	170.48	2.7x48mm
170.14	2.7x14mm	170.32	2.7x32mm	170.50	2.7x50mm
170.16	2.7x16mm	170.34	2.7x34mm	170.55	2.7x55mm
170.18	2.7x18mm	170.36	2.7x36mm	170.60	2.7x60mm
170.20	2.7x20mm	170.38	2.7x38mm		
170.22	2.7x22mm	170.40	2.7x40mm		



TITANIUM SCREWS FOR LOCKING PLATES



3.5mm TITANIUM CORTEX LOCKING SCREW

Code	Measure	Code	Measure
106.12	3.5x12mm	106.32	3.5x32mm
106.14	3.5x14mm	106.34	3.5x34mm
106.16	3.5x16mm	106.36	3.5x36mm
106.18	3.5x18mm	106.38	3.5x38mm
106.20	3.5x20mm	106.40	3.5x40mm
106.22	3.5x22mm	106.45	3.5x45mm
106.24	3.5x24mm	106.50	3.5x50mm
106.26	3.5x26mm	106.55	3.5x55mm
106.28	3.5x28mm	106.60	3.5x60mm
106.30	3.5x30mm		



3.5mm TITANIUM CANCELLOUS LOCKING SCREW

Code	Measure	Code	Measure
107.12	3.5x12mm	107.32	3.5x32mm
107.14	3.5x14mm	107.34	3.5x34mm
107.16	3.5x16mm	107.36	3.5x36mm
107.18	3.5x18mm	107.38	3.5x38mm
107.20	3.5x20mm	107.40	3.5x40mm
107.22	3.5x22mm	107.45	3.5x45mm
107.24	3.5x24mm	107.50	3.5x50mm
107.26	3.5x26mm	107.55	3.5x55mm
107.28	3.5x28mm	107.60	3.5x60mm
107.30	3.5x30mm		



3.5 mm TITANIUM CORTEX SCREW

Code	Measure	Code	Measure
112.12	3.5x12mm	112.32	3.5x32mm
112.14	3.5x14mm	112.34	3.5x34mm
112.16	3.5x16mm	112.36	3.5x36mm
112.18	3.5x18mm	112.38	3.5x38mm
112.20	3.5x20mm	112.40	3.5x40mm
112.22	3.5x22mm	112.45	3.5x45mm
112.24	3.5x24mm	112.50	3.5x50mm
112.26	3.5x26mm	112.55	3.5x55mm
112.28	3.5x28mm	112.60	3.5x60mm
112.30	3.5x30mm		



4.5mm TITANIUM CORTEX SCREW

Code	Measure	Code	Measure	Code	Measure
126.12	4.5x12mm	126.26	4.5x26mm	126.40	4.5x40mm
126.14	4.5x14mm	126.28	4.5x28mm	126.45	4.5x45mm
126.16	4.5x16mm	126.30	4.5x30mm	126.50	4.5x50mm
126.18	4.5x18mm	126.32	4.5x32mm	126.55	4.5x55mm
126.20	4.5x20mm	126.34	4.5x34mm	126.60	4.5x60mm
126.22	4.5x22mm	126.36	4.5x36mm	126.65	4.5x65mm
126.24	4.5x24mm	126.38	4.5x38mm	126.70	4.5x70mm





**5.0mm TITANIUM CORTEX
LOCKING SCREW**

Code	Measure	Code	Measure
108.20	5.0x20mm	108.40	5.0x40mm
108.22	5.0x22mm	108.42	5.0x42mm
108.24	5.0x24mm	108.44	5.0x44mm
108.26	5.0x26mm	108.46	5.0x46mm
108.28	5.0x28mm	108.48	5.0x48mm
108.30	5.0x30mm	108.50	5.0x50mm
108.32	5.0x32mm	108.55	5.0x55mm
108.34	5.0x34mm	108.60	5.0x60mm
108.36	5.0x36mm	108.65	5.0x65mm
108.38	5.0x38mm	108.70	5.0x70mm



**5.0mm TITANIUM CANNULATED CORTEX
LOCKING SCREW**

Code	Measure	Code	Measure	Code	Measure
171.20	5.0x20mm	171.42	5.0x42mm	171.85	5.0x85mm
171.22	5.0x22mm	171.44	5.0x44mm	171.90	5.0x90mm
171.24	5.0x24mm	171.46	5.0x46mm	171.95	5.0x95mm
171.26	5.0x26mm	171.48	5.0x48mm		
171.28	5.0x28mm	171.50	5.0x50mm		
171.30	5.0x30mm	171.55	5.0x55mm		
171.32	5.0x32mm	171.60	5.0x60mm		
171.34	5.0x34mm	171.65	5.0x65mm		
171.36	5.0x36mm	171.70	5.0x70mm		
171.38	5.0x38mm	171.75	5.0x75mm		
171.40	5.0x40mm	171.80	5.0x80mm		



**5.5mm TITANIUM CANCELLOUS LOCKING
SCREW**

Code	Measure	Code	Measure
109.40	5.5x40mm	109.70	5.5x70mm
109.45	5.5x45mm	109.75	5.5x75mm
109.50	5.5x50mm	109.80	5.5x80mm
109.55	5.5x55mm	109.85	5.5x85mm
109.60	5.5x60mm	109.90	5.5x90mm
109.65	5.5x65mm		



**7.3mm TITANIUM CANNULATED
CANCELLOUS LOCKING SCREW**

Code	Measure	Code	Measure
156.45	7.3x45mm	156.80	7.3x80mm
156.50	7.3x50mm	156.85	7.3x85mm
156.55	7.3x55mm	156.90	7.3x90mm
156.60	7.3x60mm	156.95	7.3x95mm
156.65	7.3x65mm	156.100	7.3x100mm
156.70	7.3x70mm	156.105	7.3x105mm
156.75	7.3x75mm	156.110	7.3x110mm



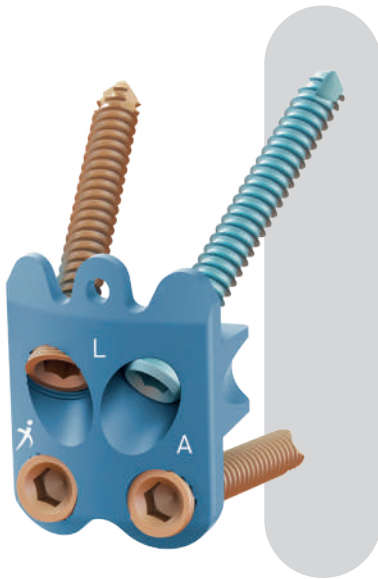
HIGH SPECIALTY



**SPIDER
HTO**

Design by **TRAUFIX**
READY TO RUN

HIGH SPECIALTY



LOCKING PLATE

SPIDER HTO

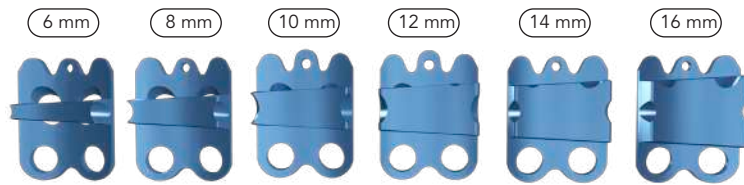
SPIDER HTO PLATE HIGH TIBIAL OSTEOTOMY

LEFT

RIGHT



Code	Block	Code	Block
253.06	6mm	252.06	6mm
253.08	8mm	252.08	8mm
253.10	10mm	252.10	10mm
253.12	12mm	252.12	12mm
253.14	14mm	252.14	14mm
253.16	16mm	252.16	16mm

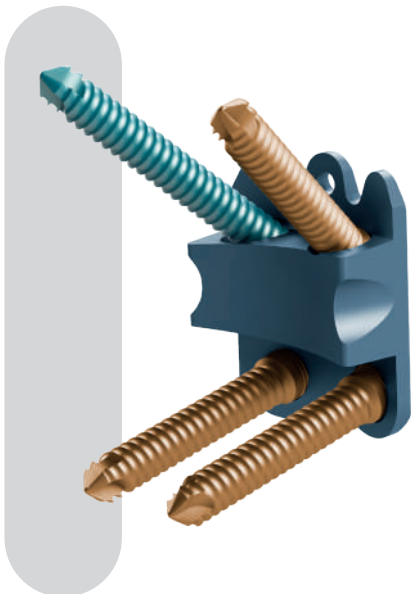


NON-THREADED HOLE

The non-threaded hole in combination with the smooth head screw allows a good plate bone fit, thus providing a controlled flexibility to the system, reducing the "stress shielding" effect.

5.5mm TITANIUM PLAIN CANCELLOUS LOCKING SCREW

Code	Measure
263.25	5.5x25mm
263.30	5.5x30mm
263.35	5.5x35mm
263.40	5.5x40mm
263.45	5.5x45mm
263.50	5.5x50mm



SCREW COMBINATIONS

SPIDER HTO PLATE (Left Code 253 / Right Code 252)

- 5.0mm TITANIUM CORTEX LOCKING SCREW (Code 108)
- 5.5mm TITANIUM CANCELLOUS LOCKING SCREW (Code 109)
- 5.5mm TITANIUM PLAIN CANCELLOUS LOCKING SCREW (Code 263)

HIGH SPECIALTY

Headless



RANGE COLORS

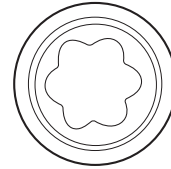
2.5mm HEADLESS COMPRESSION SCREW THS

Code	Measure	Code	Measure
244.08	2.5mm x 8mm	244.20	2.5mm x 20mm
244.10	2.5mm x 10mm	244.22	2.5mm x 22mm
244.12	2.5mm x 12mm	244.24	2.5mm x 24mm
244.14	2.5mm x 14mm	244.26	2.5mm x 26mm
244.16	2.5mm x 16mm	244.28	2.5mm x 28mm
244.18	2.5mm x 18mm	244.30	2.5mm x 30mm



5.0mm HEADLESS COMPRESSION SCREW THS

Code	Measure
243.25	5.0mm x 25mm
243.30	5.0mm x 30mm
243.35	5.0mm x 35mm
243.40	5.0mm x 40mm
243.45	5.0mm x 45mm
243.50	5.0mm x 50mm
243.55	5.0mm x 55mm
243.60	5.0mm x 60mm



Torx type Star Drive head

3.5mm HEADLESS COMPRESSION SCREW THS

Code	Measure	Code	Measure
240.10	3.5mm x 10mm	240.22	3.5mm x 22mm
240.12	3.5mm x 12mm	240.24	3.5mm x 24mm
240.14	3.5mm x 14mm	240.26	3.5mm x 26mm
240.16	3.5mm x 16mm	240.28	3.5mm x 28mm
240.18	3.5mm x 18mm	240.30	3.5mm x 30mm
240.20	3.5mm x 20mm		



7.0mm HEADLESS COMPRESSION SCREW THS

Code	Measure	Code	Measure
261.40	7.0mm x 40mm	261.80	7.0mm x 80mm
261.45	7.0mm x 45mm	261.85	7.0mm x 85mm
261.50	7.0mm x 50mm	261.90	7.0mm x 90mm
261.55	7.0mm x 55mm	261.95	7.0mm x 95mm
261.60	7.0mm x 60mm	261.100	7.0mm x 100mm
261.65	7.0mm x 65mm	261.105	7.0mm x 105mm
261.70	7.0mm x 70mm	261.110	7.0mm x 110mm
261.75	7.0mm x 75mm	261.120	7.0mm x 120mm



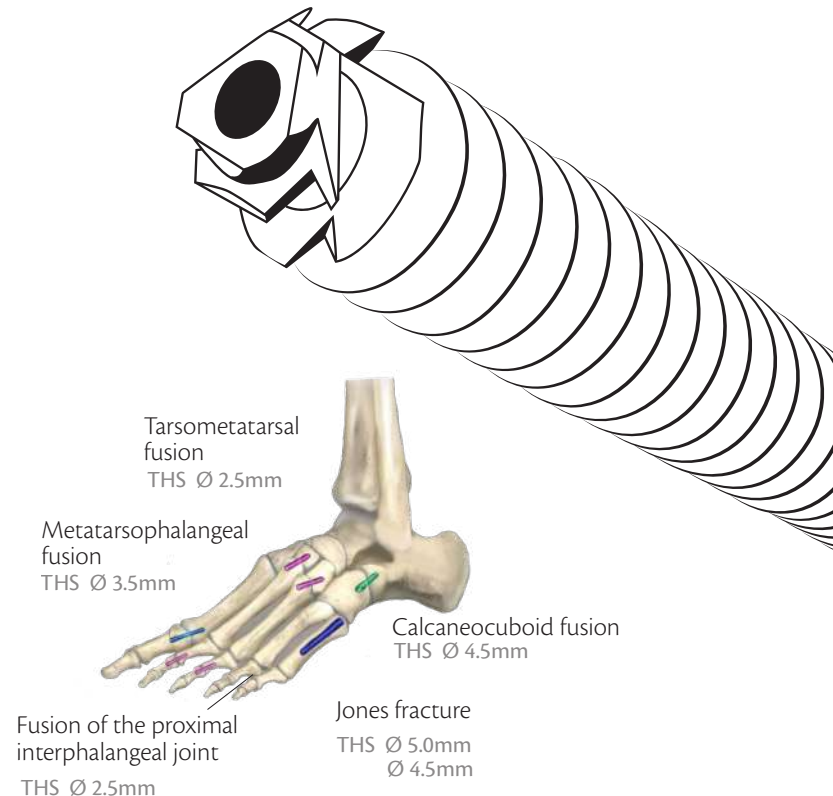
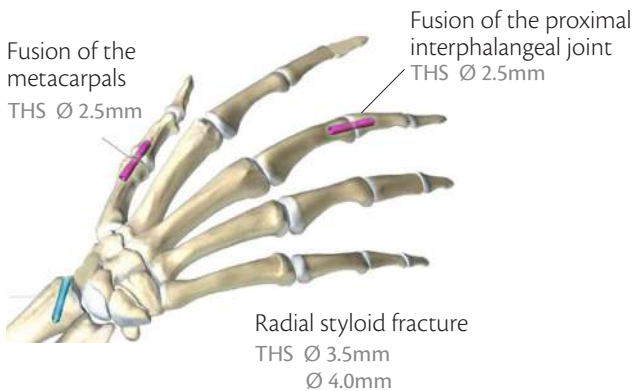
4.0mm HEADLESS COMPRESSION SCREW THS

Code	Measure	Code	Measure
241.16	4.0mm x 16mm	241.26	4.0mm x 26mm
241.18	4.0mm x 18mm	241.28	4.0mm x 28mm
241.20	4.0mm x 20mm	241.30	4.0mm x 30mm
241.22	4.0mm x 22mm	241.32	4.0mm x 32mm
241.24	4.0mm x 24mm	241.34	4.0mm x 34mm



4.5mm HEADLESS COMPRESSION SCREW THS

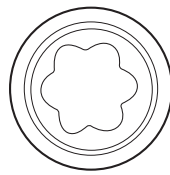
Code	Measure	Code	Measure
242.20	4.5mm x 20mm	242.30	4.5mm x 30mm
242.22	4.5mm x 22mm	242.35	4.5mm x 35mm
242.24	4.5mm x 24mm	242.40	4.5mm x 40mm
242.26	4.5mm x 26mm	242.45	4.5mm x 45mm
242.28	4.5mm x 28mm	242.50	4.5mm x 50mm



Herbert

1.7mm HERBERT CANNULATED COMPRESSION SCREW HFS

Code	Measure	Code	Measure
259.06	1.7 mm x 6mm	259.13	1.7 mm x 13mm
259.07	1.7 mm x 7mm	259.14	1.7 mm x 14mm
259.08	1.7 mm x 8mm	259.15	1.7 mm x 15mm
259.09	1.7 mm x 9mm	259.16	1.7 mm x 16mm
259.10	1.7 mm x 10mm	259.18	1.7 mm x 18mm
259.11	1.7 mm x 11mm	259.20	1.7 mm x 20mm
259.12	1.7 mm x 12mm		



Torx type Star Drive head

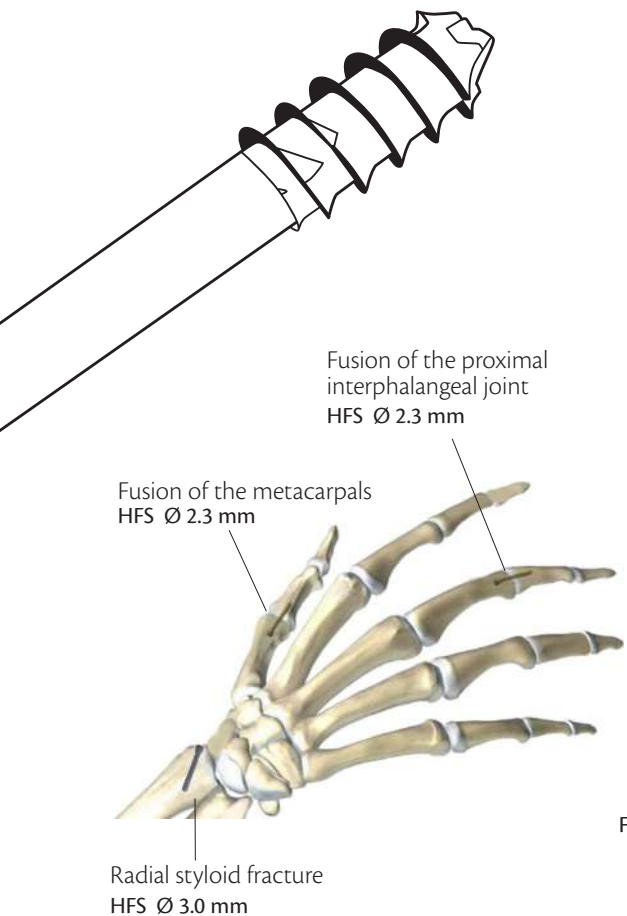
3.0mm HERBERT CANNULATED COMPRESSION SCREW HFS

Code	Measure	Code	Measure
239.10	3.0 mm x 10mm	239.26	3.0 mm x 26mm
239.12	3.0 mm x 12mm	239.28	3.0 mm x 28mm
239.14	3.0 mm x 14mm	239.30	3.0 mm x 30mm
239.16	3.0 mm x 16mm	239.32	3.0 mm x 32mm
239.18	3.0 mm x 18mm	239.34	3.0 mm x 34mm
239.20	3.0 mm x 20mm	239.36	3.0 mm x 36mm
239.22	3.0 mm x 22mm	239.38	3.0 mm x 38mm
239.24	3.0 mm x 24mm	239.40	3.0 mm x 40mm



2.3mm HERBERT CANNULATED COMPRESSION SCREW HFS

Code	Measure	Code	Measure
238.10	2.3mm x 10mm	238.22	2.3mm x 22mm
238.12	2.3mm x 12mm	238.24	2.3mm x 24mm
238.14	2.3mm x 14mm	238.26	2.3mm x 26mm
238.16	2.3mm x 16mm	238.28	2.3mm x 28mm
238.18	2.3mm x 18mm	238.30	2.3mm x 30mm
238.20	2.3mm x 20mm		



Shoulder
Fractures, bone ligament and tendon avulsion:

- Proximal humerus
- Glenohumeral joint

Elbow
Fractures:

- Distal humerus
- Proximal humerus
- Proximal radio

Wrist
Fractures, styloid avulsion and fixation bone fragmentation in:

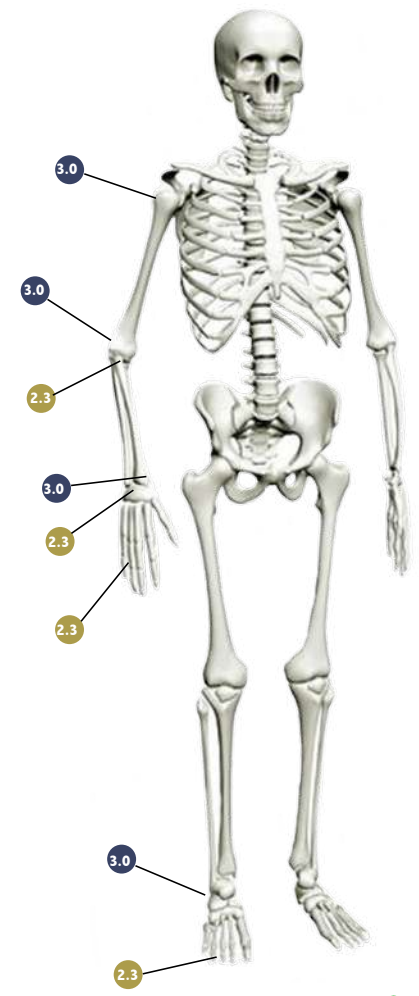
- Radio
- Ulna

Hand
Transverse fractures, bone ligament and avulsion of tendon, as well as arthrodesis and osteotomies:

- Phalanges
- Metacarpianos
- Carpianos

Foot
Fractures, arthrodesis and correction of osteotomies:

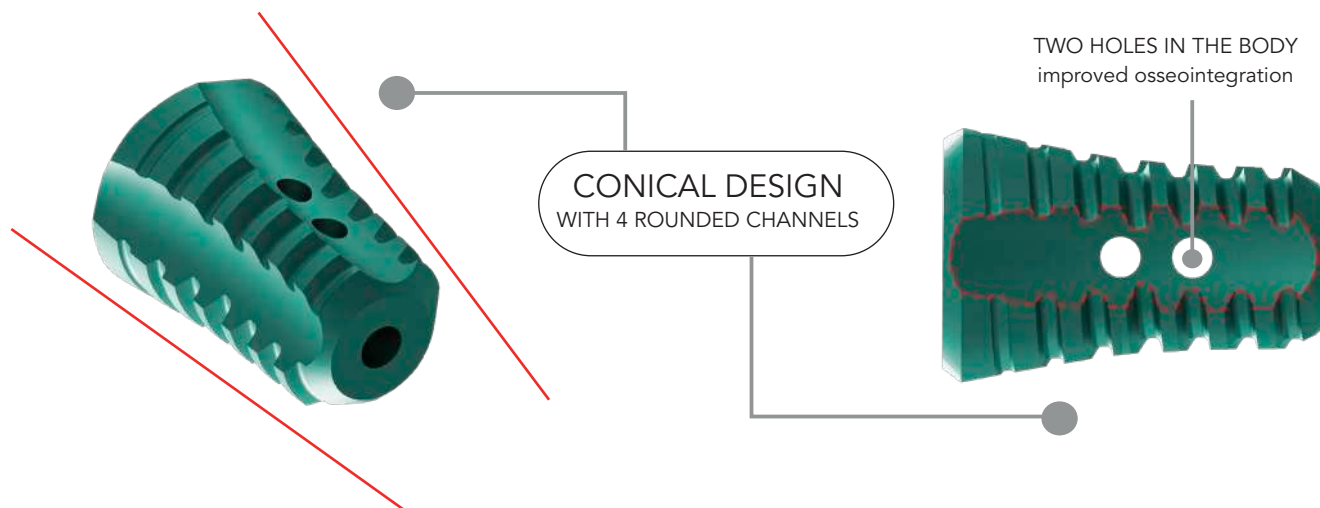
- Phalanges
- Metatarsianos
- Tarsianos



TARFIX

CANULATED SUBTALAR SCREW FOR CORRECTION OF FLAT FOOT VALGUS TARFIX

Code	Measure
262.08	8 mm x 14mm
262.09	9 mm x 14mm
262.10	10 mm x 14mm
262.11	11 mm x 16mm
262.12	12 mm x 16mm
262.13	13 mm x 19mm
262.14	14 mm x 19mm



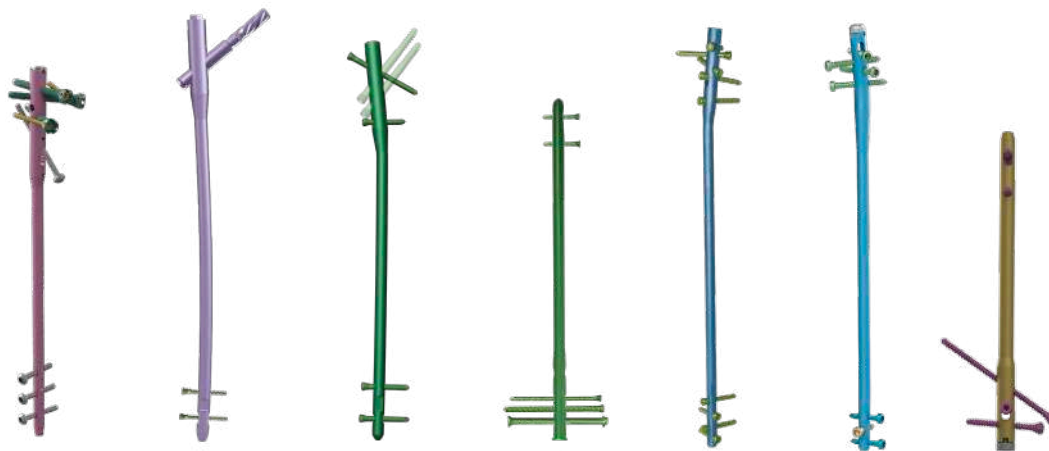
TITANIUM INTRAMEDULLARY NAILS



H-FIX
HUMERAL NAIL SYSTEM

Design by **TRAUFIX**
READY TO RUN

INTRAMEDULLARY NAIL AND SCREW COMBINATIONS



SHORT HUMERAL INTRAMEDULLARY NAIL H-FIX | DIAMETER 9 (Left Code 387 / Right Code 537)

HUMERAL INTRAMEDULLARY NAIL H-FIX | DIAMETER 7 (Left Code 390 / Right Code 463), DIAMETER 8 (Left Code 391 / Right Code 464)

4.5mm LOCKING PIN FOR H-FIX INTRAMEDULLARY NAIL (Code 423, Length 20mm-60mm)
 3.5mm LOCKING SCREW FOR H-FIX INTRAMEDULLARY NAIL (Code 421, Length 25mm-55mm)
 3.5mm TORX LOCKING SCREW FOR INTRAMEDULLARY NAIL (Code 195X, Length 25mm-55mm)
 END CAP FOR H-FIX INTRAMEDULLARY NAIL 0mm, 5mm, 10mm, 15mm y 20mm (Code 425)

ELIX PROXIMAL FEMORAL NAIL ANTIROTATION SMALL | DIAMETER 9(Code 277), DIAMETER 10(Code 278), DIAMETER 11(Code 279), DIAMETER 12(Code 280)

ELIX PROXIMAL FEMORAL NAIL ANTIROTATION | DIAMETER 9(Left Code 282/ Right Code 283), DIAMETER 10(Left Code 284/ Right Code 285), DIAMETER 11 (Left Code 286/ Right Code 287)

4.5mm LOCKING SCREW FOR INTRAMEDULLARY NAIL INTRALOCK (Code 166, Length 25mm-80mm)
 HELICAL BLADE FOR FEMORAL NAIL ANTIROTATION 10.5mm (Code 293)
 LOCKING PLUG FOR FEMORAL NAIL ANTIROTATION 0mm, 5mm, 10mm (Code 292)

TROCHANTERIC NAIL INTRALOCK | DIAMETER 9 (Code 157), DIAMETER 10 (Code 158), DIAMETER 11 (Code 216)

FEMORAL INTRAMEDULLARY NAIL INTRALOCK | DIAMETER 9(Left Code 136/ Right Code 138), DIAMETER 10(Left Code 137/ Right Code 139), DIAMETER 11 (Left Code 180/ Right Code 181)

4.5mm LOCKING SCREW FOR INTRAMEDULLARY NAIL INTRALOCK (Code 166, Length 25mm-80mm)
 6.5mm SUBTROCHANTERIC LAG SCREW INTRALOCK (Code 167, Length 60mm-105mm)
 END CAP FOR FEMORAL NAIL INTRALOCK (Code 168.12)

SHORT RETROGRADE FEMORAL NAIL INTRALOCK | DIAMETER 9(Code 161), DIAMETER 10(Code159), DIAMETER 11(Code160)

RETROGRADE FEMORAL NAIL INTRALOCK | DIAMETER 9(Code 176), DIAMETER 10(Code 174), DIAMETER 11(Code 175)

4.5mm LOCKING SCREW FOR INTRAMEDULLARY NAIL INTRALOCK (Code 166, Length 25mm-80mm)
 6.4mm SCREW FOR RETROGRADE NAIL INTRALOCK (Code 179, Length 25mm-120mm)
 6.4mm COMPRESSION SCREW FOR RETROGRADE NAIL INTRALOCK (Code 178, Length 40mm-120mm)
 WASHER OF 4.5mm - 6.5mm (Code 182.65)
 END CAP FOR FEMORAL NAIL INTRALOCK (Code 168.12)

TIBIAL INTRAMEDULLARY NAIL INTRALOCK | DIAMETER 8.5(Code 163), DIAMETER 9.5(Code 162)

4.5mm LOCKING SCREW FOR INTRAMEDULLARY NAIL INTRALOCK (Code 166, Length 25mm-80mm)
 END CAP FOR TIBIAL NAIL INTRALOCK (Code 169.11)

T-FIX INTRAMEDULLARY NAIL FOR THE TIBIA | DIAMETER 8.3 (Code 660), DIAMETER 9.0 (Code 511), DIAMETER 10 (Code 512)

4.3mm LOCKING SCREW FOR T-FIX INTRAMEDULLARY NAIL (Code 661, Length 26mm-45mm)
 4.5mm LOCKING SCREW FOR T-FIX INTRAMEDULLARY NAIL (Code 554, Length 25mm-50mm)
 5.0mm LOCKING SCREW FOR T-FIX INTRAMEDULLARY NAIL (Code 556, Length 25mm-80mm)
 END CAP 5mm, 10mm, 15mm (Code 426)

TALOFIX NAIL FOR ANKLE ARTHRODESIS | DIAMETER 10 (Left Code 222 / Right Code 223), DIAMETER 11 (Left Code 224/ Right Code 225), DIAMETER 12 (Left Code 226/ Right Code 227)

5.0mm LOCKING SCREW FOR TALOFIX INTRAMEDULLARY NAIL (Code 424, Length 25mm-110mm)
 END CAP 0mm, 5mm, 10mm (Code 314)



SHORT HUMERAL INTRAMEDULLARY NAIL H-FIX

DIAMETER 9mm

LEFT

RIGHT

Code	Measure	Code	Measure
387.160	9X160mm	537.160	9X160mm



4.5MM LOCKING PIN FOR H-FIX INTRAMEDULLARY NAIL

Code	Measure	Code	Measure
423.20	4.5X20mm	423.45	4.5X45mm
423.25	4.5X25mm	423.50	4.5X50mm
423.30	4.5X30mm	423.55	4.5X55mm
423.35	4.5X35mm	423.60	4.5X60mm
423.40	4.5X40mm		



HUMERAL INTRAMEDULLARY NAIL H-FIX

DIAMETER 7mm

LEFT

RIGHT

Code	Measure	Code	Measure
390.200	7X200mm	463.200	7X200mm
390.220	7X220mm	463.220	7X220mm
390.240	7X240mm	463.240	7X240mm
390.260	7X260mm	463.260	7X260mm
390.280	7X280mm	463.280	7X280mm
390.300	7X300mm	463.300	7X300mm

DIAMETER 8mm

LEFT

RIGHT

Code	Measure	Code	Measure
391.200	8X200mm	464.200	8X200mm
391.220	8X220mm	464.220	8X220mm
391.240	8X240mm	464.240	8X240mm
391.260	8X260mm	464.260	8X260mm
391.280	8X280mm	464.280	8X280mm
391.300	8X300mm	464.300	8X300mm



3.5MM LOCKING SCREW FOR H-FIX INTRAMEDULLARY NAIL

Code	Measure	Code	Measure
421.25	3.5X25mm	421.45	3.5X45mm
421.30	3.5X30mm	421.50	3.5X50mm
421.35	3.5X35mm	421.55	3.5X55mm
421.40	3.5X40mm		



3.5MM TORX LOCKING SCREW FOR INTRAMEDULLARY NAIL

Code	Measure	Code	Measure
195.25X	3.5X25mm	195.45X	3.5X45mm
195.30X	3.5X30mm	195.50X	3.5X50mm
195.35X	3.5X35mm	195.55X	3.5X55mm
195.40X	3.5X40mm		



END CAP FOR H-FIX INTRAMEDULLARY NAIL

Code	Extensión
425.00	0mm
425.05	5mm
425.10	10mm
425.15	15mm
425.20	20mm



ELIX PROXIMAL FEMORAL NAIL ANTIROTATION SMALL

DIAMETER 9mm

Code	Measure
277.170	9X170mm
277.200	9X200mm
277.240	9X240mm

DIAMETER 10mm

Code	Measure
278.170	10X170mm
278.200	10X200mm
278.240	10X240mm

DIAMETER 11mm

Code	Measure
279.170	11X170mm
279.200	11X200mm
279.240	11X240mm

DIAMETER 12mm

Code	Measure
280.170	12X170mm
280.200	12X200mm
280.240	12X240mm



ELIX PROXIMAL FEMORAL NAIL ANTIROTATION

DIAMETER 9mm

LEFT

Code	Measure
282.320	9X320mm
282.340	9X340mm
282.360	9X360mm
282.380	9X380mm
282.400	9X400mm

RIGHT

Code	Measure
283.320	9X320mm
283.340	9X340mm
283.360	9X360mm
283.380	9X380mm
283.400	9X400mm

DIAMETER 10mm

LEFT

Code	Measure
284.320	10X320mm
284.340	10X340mm
284.360	10X360mm
284.380	10X380mm
284.400	10X400mm

RIGHT

Code	Measure
285.320	10X320mm
285.340	10X340mm
285.360	10X360mm
285.380	10X380mm
285.400	10X400mm

DIAMETER 11mm

LEFT

Code	Measure
286.320	11X320mm
286.340	11X340mm
286.360	11X360mm
286.380	11X380mm
286.400	11X400mm

RIGHT

Code	Measure
287.320	11X320mm
287.340	11X340mm
287.360	11X360mm
287.380	11X380mm
287.400	11X400mm

HELICAL BLADE FOR FEMORAL NAIL ANTIROTATION 10.5MM

Code	Measure	Code	Measure
293.75	10.5X75mm	293.100	10.5X100mm
293.80	10.5X80mm	293.105	10.5X105mm
293.85	10.5X85mm	293.110	10.5X110mm
293.90	10.5X90mm	293.115	10.5X115mm
293.95	10.5X95mm	293.120	10.5X120mm



LOCKING PLUG FOR FEMORAL NAIL ANTIROTATION

Code	Extension
292.00	0mm
292.05	5mm
292.10	10mm



Intralock

Titanium Femur



TROCHANTERIC NAIL INTRALOCK

DIAMETER 9mm

Code	Measure
157.20	9 X 200mm
157.24	9 X 240mm

DIAMETER 10mm

Code	Measure
158.20	10 X 200mm
158.24	10 X 240mm

DIAMETER 11mm

Code	Measure
216.20	11 X 200mm
216.24	11 X 240mm



FEMORAL INTRAMEDULLARY NAIL INTRALOCK

DIAMETER 9mm

LEFT

Code	Measure
136.32	9X320mm
136.34	9X340mm
136.36	9X360mm
136.38	9X380mm
136.40	9X400mm

RIGHT

Code	Measure
138.32	9X320mm
138.34	9X340mm
138.36	9X360mm
138.38	9X380mm
138.40	9X400mm

DIAMETER 10mm

LEFT

Code	Measure
137.32	10X320mm
137.34	10X340mm
137.36	10X360mm
137.38	10X380mm
137.40	10X400mm

RIGHT

Code	Measure
139.32	10X320mm
139.34	10X340mm
139.36	10X360mm
139.38	10X380mm
139.40	10X400mm

DIAMETER 11mm

LEFT

Code	Measure
180.32	11X320mm
180.34	11X340mm
180.36	11X360mm
180.38	11X380mm
180.40	11X400mm

RIGHT

Code	Measure
181.32	11X320mm
181.34	11X340mm
181.36	11X360mm
181.38	11X380mm
181.40	11X400mm



SHORT RETROGRADE FEMORAL NAIL INTRALOCK

DIAMETER 9mm

Code	Measure
161.24	9X240mm
161.26	9X260mm

DIAMETER 10mm

Code	Measure
159.24	10X240mm
159.26	10X260mm

DIAMETER 11mm

Code	Measure
160.24	11X240mm
160.26	11X260mm



RETROGRADE FEMORAL NAIL INTRALOCK

DIAMETER 9mm

Code	Measure
176.32	9X320mm
176.34	9X340mm
176.36	9X360mm
176.38	9X380mm

DIAMETER 10mm

Code	Measure
174.32	10X320mm
174.34	10X340mm
174.36	10X360mm
174.38	10X380mm

DIAMETER 11 mm

Code	Measure
175.32	11X320mm
175.34	11X340mm
175.36	11X360mm
175.38	11X380mm



NAIL FOR ANKLE ARTHRODESIS



DIAMETER 10mm

LEFT		RIGHT	
Code	Measure	Code	Measure
222.16	10X160mm	223.16	10X160mm
222.20	10X200mm	223.20	10X200mm
222.25	10X250mm	223.25	10X250mm

DIAMETER 11mm

LEFT		RIGHT	
Code	Measure	Code	Measure
224.16	11X160mm	225.16	11X160mm
224.20	11X200mm	225.20	11X200mm
224.25	11X250mm	225.25	11X250mm

DIAMETER 12mm

LEFT		RIGHT	
Code	Measure	Code	Measure
226.16	12X160mm	227.16	12X160mm
226.20	12X200mm	227.20	12X200mm
226.25	12X250mm	227.25	12X250mm

5.0MM LOCKING SCREW FOR TALOFIX INTRAMEDULAR NAIL



Code	Measure	Code	Measure
424.25	5X25mm	424.70	5X70mm
424.30	5X30mm	424.75	5X75mm
424.35	5X35mm	424.80	5X80mm
424.40	5X40mm	424.85	5X85mm
424.45	5X45mm	424.90	5X90mm
424.50	5X50mm	424.95	5X95mm
424.55	5X55mm	424.100	5X100mm
424.60	5X60mm	424.105	5X105mm
424.65	5X65mm	424.110	5X110mm

END CAP FOR TALOFIX INTRAMEDULAR NAIL



Code	Extension
314.00	0mm
314.05	5mm
314.10	10mm



TIBIAL INTRAMEDULLARY NAIL INTRALOCK



DIAMETER 8.5mm DIAMETER 9.5mm

Code	Measure	Code	Measure
163.255	8.5X255mm	162.255	9.5X255mm
163.270	8.5X270mm	162.270	9.5X270mm
163.285	8.5X285mm	162.285	9.5X285mm
163.300	8.5X300mm	162.300	9.5X300mm
163.315	8.5X315mm	162.315	9.5X315mm
163.330	8.5X330mm	162.330	9.5X330mm
163.345	8.5X345mm	162.345	9.5X345mm
163.360	8.5X360mm	162.360	9.5X360mm
163.375	8.5X375mm	162.375	9.5X375mm



SUPRA & INFRAPATELLAR TIBIAL NAIL

T-FIX INTRAMEDULLARY NAIL FOR THE TIBIA

DIAMETER 8.3mm

Code	Measure
660.250	8.3X250mm
660.265	8.3X265mm
660.280	8.3X280mm
660.295	8.3X295mm
660.310	8.3X310mm
660.325	8.3X325mm
660.340	8.3X340mm
660.355	8.3X355mm
660.370	8.3X370mm

DIAMETER 9.0mm

Code	Measure
511.250	9.0X250mm
511.265	9.0X265mm
511.280	9.0X280mm
511.295	9.0X295mm
511.310	9.0X310mm
511.325	9.0X325mm
511.340	9.0X340mm
511.355	9.0X355mm
511.370	9.0X370mm

DIAMETER 10.0mm

Code	Measure
512.250	10.0X250mm
512.265	10.0X265mm
512.280	10.0X280mm
512.295	10.0X295mm
512.310	10.0X310mm
512.325	10.0X325mm
512.340	10.0X340mm
512.355	10.0X355mm
512.370	10.0X370mm



4.3MM LOCKING SCREW FOR T-FIX INTRAMEDULLARY NAIL

Code	Measure
661.26	4.3X26mm
661.30	4.3X30mm
661.35	4.3X35mm
661.40	4.3X40mm
661.45	4.3X45mm



4.5MM LOCKING SCREW FOR T-FIX INTRAMEDULLARY NAIL

Code	Measure
554.25	4.5X25mm
554.30	4.5X30mm
554.35	4.5X35mm
554.40	4.5X40mm
554.45	4.5X45mm
554.50	4.5X50mm



5.0MM LOCKING SCREW FOR T-FIX INTRAMEDULLARY NAIL

Code	Measure	Code	Measure
556.25	5.0X25mm	556.55	5.0X55mm
556.30	5.0X30mm	556.60	5.0X60mm
556.35	5.0X35mm	556.65	5.0X65mm
556.40	5.0X40mm	556.70	5.0X70mm
556.45	5.0X45mm	556.75	5.0X75mm
556.50	5.0X50mm	556.80	5.0X80mm



END CAP FOR T-FIX INTRAMEDULLARY NAIL

Code	Extension
426.05	5mm
426.10	10mm
426.15	15mm



SUPRA & INFRAPATELLAR TIBIAL NAIL

TWO SYSTEMS IN A SINGLE
INTRAMEDULLARY NAIL

SUPRA-PATELLAR



INFRA-PATELLAR



ALL IN ONE KIT

INSTRUMENTATION & IMPLANTS
ALL-IN-ONE | EASY & COMFORTABLE



Design by **TRAUFIX**
READY TO RUN

SCREWS FOR NAILS

3.5mm LOCKING SCREW FOR INTRAMEDULLARY NAIL INTRALOCK

Code	Measure
195.20	3.5X20mm
195.25	3.5X25mm
195.30	3.5X30mm
195.35	3.5X35mm
195.40	3.5X40mm
195.45	3.5X45mm
195.50	3.5X50mm



4.5mm LOCKING SCREW FOR INTRAMEDULLARY NAIL INTRALOCK

Code	Measure	Code	Measure
166.25	4.5X25mm	166.55	4.5X55mm
166.30	4.5X30mm	166.60	4.5X60mm
166.35	4.5X35mm	166.65	4.5X65mm
166.40	4.5X40mm	166.70	4.5X70mm
166.45	4.5X45mm	166.75	4.5X75mm
166.50	4.5X50mm	166.80	4.5X80mm



6.4mm SCREW FOR RETROGRADE NAIL INTRALOCK

Code	Measure	Code	Measure
179.25	6.4X25mm	179.75	6.4X75mm
179.30	6.4X30mm	179.80	6.4X80mm
179.35	6.4X35mm	179.85	6.4X85mm
179.40	6.4X40mm	179.90	6.4X90mm
179.45	6.4X45mm	179.95	6.4X95mm
179.50	6.4X50mm	179.100	6.4X100mm
179.55	6.4X55mm	179.105	6.4X105mm
179.60	6.4X60mm	179.110	6.4X110mm
179.65	6.4X65mm	179.115	6.4X115mm
179.70	6.4X70mm	179.120	6.4X120mm



6.5mm SUBTROCHANTERIC LAG SCREW INTRALOCK

Code	Measure	Code	Measure
167.60	6.5 X 60mm	167.85	6.5 X 85mm
167.65	6.5 X 65mm	167.90	6.5 X 90mm
167.70	6.5 X 70mm	167.95	6.5 X 95mm
167.75	6.5 X 75mm	167.100	6.5 X 100mm
167.80	6.5 X 80mm	167.105	6.5 X 105mm



**6.4mm COMPRESSION SCREW
FOR RETROGRADE NAIL INTRALOCK**

Code	Measure	Code	Measure
178.40	6.4X40mm	178.85	6.4X85mm
178.45	6.4X45mm	178.90	6.4X90mm
178.50	6.4X50mm	178.95	6.4X95mm
178.55	6.4X55mm	178.100	6.4X100mm
178.60	6.4X60mm	178.105	6.4X105mm
178.65	6.4X65mm	178.110	6.4X110mm
178.70	6.4X70mm	178.115	6.4X115mm
178.75	6.4X75mm	178.120	6.4X120mm
178.80	6.4X80mm		



**WASHER
DE 4.5mm A 6.5mm**

Code
182.65



**END CAP FOR FEMORAL NAIL
INTRALOCK**

Code
168.12



**END CAP FOR TIBIAL NAIL
INTRALOCK**

Code
169.11



**END CAP FOR HUMERAL NAIL
INTRALOCK**

Code
196.08



STAINLESS STEEL OSTEOSYNTHESIS





3.5mm ONE-THIRD TUBULAR PLATE



Code	Holes	Code	Holes
016.04	4 Holes	016.08	8 Holes
016.05	5 Holes	016.09	9 Holes
016.06	6 Holes	016.10	10 Holes
016.07	7 Holes	016.12	12 Holes



3.5mm D.C.P. PLATE CE

Code	Holes	Code	Holes
018.04	4 Holes	018.08	8 Holes
018.05	5 Holes	018.09	9 Holes
018.06	6 Holes	018.10	10 Holes
018.07	7 Holes	018.12	12 Holes



4.5mm NARROW D.C.P. PLATE CE

Code	Holes	Code	Holes
020.04	4 Holes	020.09	9 Holes
020.05	5 Holes	020.10	10 Holes
020.06	6 Holes	020.12	12 Holes
020.07	7 Holes	020.14	14 Holes
020.08	8 Holes	020.16	16 Holes



4.5mm BROAD D.C.P. PLATE CE

Code	Holes	Code	Holes
029.05	5 Holes	029.10	10 Holes
029.06	6 Holes	029.12	12 Holes
029.07	7 Holes	029.14	14 Holes
029.08	8 Holes	029.16	16 Holes
029.09	9 Holes		



DOUBLE WALL TUBE PLATES FOR DHS / DCS

95° DCS PLATE CE

Code	Holes	Code	Holes
024.05	5 Holes	024.12	12 Holes
024.07	7 Holes	024.14	14 Holes
024.09	9 Holes	024.16	16 Holes(*)

(*)ON REQUEST



SACO HIGH TIBIAL OSTEOTOMY PLATE

Code
131.02



135° DHS PLATE CE

Code	Holes	Code	Holes
025.04	4 Holes	025.12	12 Holes
025.06	6 Holes	025.14	14 Holes
025.09	9 Holes	025.16	16 Holes(*)

(*)ON REQUEST



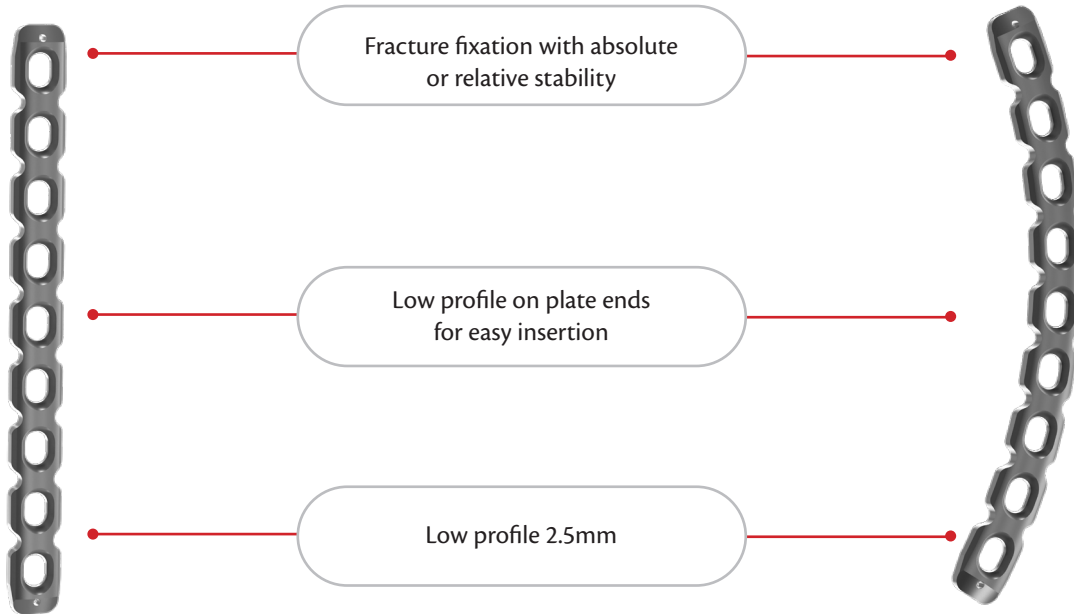
3.5mm RECONSTRUCTION PLATE

Code	Holes	Code	Holes
022.04	4 Holes	022.10	10 Holes
022.05	5 Holes	022.12	12 Holes
022.06	6 Holes	022.14	14 Holes
022.07	7 Holes	022.16	16 Holes
022.08	8 Holes	022.18	18 Holes
022.09	9 Holes	022.20	20 Holes



3.5mm CURVED RECONSTRUCTION PLATE

Code	Holes	Code	Holes
205.04	4 Holes	205.10	10 Holes
205.05	5 Holes	205.12	12 Holes
205.06	6 Holes	205.14	14 Holes
205.07	7 Holes	205.16	16 Holes
205.08	8 Holes	205.18	18 Holes
205.09	9 Holes	205.20	20 Holes



SS SCREWS



3.5mm CORTEX SCREW

Code	Measure	Code	Measure	Code	Measure
057.10	3.5x10mm	057.22	3.5x22mm	057.34	3.5x34mm
057.12	3.5x12mm	057.24	3.5x24mm	057.36	3.5x36mm
057.14	3.5x14mm	057.26	3.5x26mm	057.38	3.5x38mm
057.16	3.5x16mm	057.28	3.5x28mm	057.40	3.5x40mm
057.18	3.5x18mm	057.30	3.5x30mm	057.45	3.5x45mm
057.20	3.5x20mm	057.32	3.5x32mm	057.50	3.5x50mm



3.5mm CORTEX SCREW SELF-TAPPING

Code	Measure	Code	Measure	Code	Measure
057.10A	3.5x10mm	057.22A	3.5x22mm	057.34A	3.5x34mm
057.12A	3.5x12mm	057.24A	3.5x24mm	057.36A	3.5x36mm
057.14A	3.5x14mm	057.26A	3.5x26mm	057.38A	3.5x38mm
057.16A	3.5x16mm	057.28A	3.5x28mm	057.40A	3.5x40mm
057.18A	3.5x18mm	057.30A	3.5x30mm	057.45A	3.5x45mm
057.20A	3.5x20mm	057.32A	3.5x32mm	057.50A	3.5x50mm



4.0mm CANCELLOUS SCREW PARTIALLY THREADED

Code	Measure	Code	Measure	Code	Measure
058.10	4.0x10mm	058.20	4.0x20mm	058.30	4.0x30mm
058.12	4.0x12mm	058.22	4.0x22mm	058.35	4.0x35mm
058.14	4.0x14mm	058.24	4.0x24mm	058.40	4.0x40mm
058.16	4.0x16mm	058.26	4.0x26mm	058.45	4.0x45mm
058.18	4.0x18mm	058.28	4.0x28mm	058.50	4.0x50mm



4.0mm CANCELLOUS SCREW PARTIALLY THREADED SELF-TAPPING

Code	Measure	Code	Measure	Code	Measure
058.10A	4.0x10mm	058.20A	4.0x20mm	058.30A	4.0x30mm
058.12A	4.0x12mm	058.22A	4.0x22mm	058.35A	4.0x35mm
058.14A	4.0x14mm	058.24A	4.0x24mm	058.40A	4.0x40mm
058.16A	4.0x16mm	058.26A	4.0x26mm	058.45A	4.0x45mm
058.18A	4.0x18mm	058.28A	4.0x28mm	058.50A	4.0x50mm



4.0mm CANCELLOUS SCREW FULLY THREADED

Code	Measure	Code	Measure	Code	Measure
059.10	4.0x10mm	059.22	4.0x22mm	059.34	4.0x34mm
059.12	4.0x12mm	059.24	4.0x24mm	059.36	4.0x36mm
059.14	4.0x14mm	059.26	4.0x26mm	059.38	4.0x38mm
059.16	4.0x16mm	059.28	4.0x28mm	059.40	4.0x40mm
059.18	4.0x18mm	059.30	4.0x30mm	059.45	4.0x45mm
059.20	4.0x20mm	059.32	4.0x32mm	059.50	4.0x50mm



4.0mm CANCELLOUS SCREW FULLY THREADED SELF-TAPPING

Code	Measure	Código	Measure	Code	Measure
059.10A	4.0x10mm	059.22A	4.0x22mm	059.34A	4.0x34mm
059.12A	4.0x12mm	059.24A	4.0x24mm	059.36A	4.0x36mm
059.14A	4.0x14mm	059.26A	4.0x26mm	059.38A	4.0x38mm
059.16A	4.0x16mm	059.28A	4.0x28mm	059.40A	4.0x40mm
059.18A	4.0x18mm	059.30A	4.0x30mm	059.45A	4.0x45mm
059.20A	4.0x20mm	059.32A	4.0x32mm	059.50A	4.0x50mm



4.0 mm CANNULATED SCREW

Code	Measure	Code	Measure	Code	Measure
055.10	4.0x10mm	055.26	4.0x26mm	055.40	4.0x40mm
055.12	4.0x12mm	055.28	4.0x28mm	055.42	4.0x42mm
055.14	4.0x14mm	055.30	4.0x30mm	055.44	4.0x44mm
055.16	4.0x16mm	055.32	4.0x32mm	055.46	4.0x46mm
055.18	4.0x18mm	055.34	4.0x34mm	055.48	4.0x48mm
055.20	4.0x20mm	055.35	4.0x35mm	055.50	4.0x50mm
055.22	4.0x22mm	055.36	4.0x36mm		
055.24	4.0x24mm	055.38	4.0x38mm		

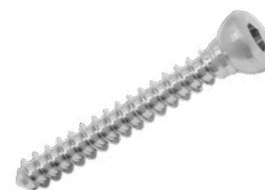


SS SCREWS



4.5mm CORTEX SCREW

Code	Measure	Code	Measure	Code	Measure
056.12	4.5x12mm	056.32	4.5x32mm	056.52	4.5x52mm
056.14	4.5x14mm	056.34	4.5x34mm	056.54	4.5x54mm
056.16	4.5x16mm	056.36	4.5x36mm	056.56	4.5x56mm
056.18	4.5x18mm	056.38	4.5x38mm	056.58	4.5x58mm
056.20	4.5x20mm	056.40	4.5x40mm	056.60	4.5x60mm
056.22	4.5x22mm	056.42	4.5x42mm	056.62	4.5x62mm
056.24	4.5x24mm	056.44	4.5x44mm	056.64	4.5x64mm
056.26	4.5x26mm	056.46	4.5x46mm	056.70	4.5x70mm
056.28	4.5x28mm	056.48	4.5x48mm		
056.30	4.5x30mm	056.50	4.5x50mm		



4.5mm CORTEX SCREW SELF-TAPPING

Code	Measure	Code	Measure	Code	Measure
056.12A	4.5x12mm	056.32A	4.5x32mm	056.52A	4.5x52mm
056.14A	4.5x14mm	056.34A	4.5x34mm	056.54A	4.5x54mm
056.16A	4.5x16mm	056.36A	4.5x36mm	056.56A	4.5x56mm
056.18A	4.5x18mm	056.38A	4.5x38mm	056.58A	4.5x58mm
056.20A	4.5x20mm	056.40A	4.5x40mm	056.60A	4.5x60mm
056.22A	4.5x22mm	056.42A	4.5x42mm	056.62A	4.5x62mm
056.24A	4.5x24mm	056.44A	4.5x44mm	056.64A	4.5x64mm
056.26A	4.5x26mm	056.46A	4.5x46mm	056.70A	4.5x70mm
056.28A	4.5x28mm	056.48A	4.5x48mm		
056.30A	4.5x30mm	056.50A	4.5x50mm		



6.5mm CANCELLOUS SCREW 16mm THREAD

Code	Measure	Code	Measure	Code	Measure
060.35	6.5x35mm	060.65	6.5x65mm	060.95	6.5x95mm
060.40	6.5x40mm	060.70	6.5x70mm	060.100	6.5x100mm
060.45	6.5x45mm	060.75	6.5x75mm	060.105	6.5x105mm
060.50	6.5x50mm	060.80	6.5x80mm	060.110	6.5x110mm
060.55	6.5x55mm	060.85	6.5x85mm		
060.60	6.5x60mm	060.90	6.5x90mm		



6.5mm CANCELLOUS SCREW 16mm THREAD SELF-TAPPING

Code	Measure	Code	Measure	Code	Measure
060.30A	6.5x30mm	060.60A	6.5x60mm	060.90A	6.5x90mm
060.35A	6.5x35mm	060.65A	6.5x65mm	060.95A	6.5x95mm
060.40A	6.5x40mm	060.70A	6.5x70mm	060.100A	6.5x100mm
060.45A	6.5x45mm	060.75A	6.5x75mm	060.105A	6.5x105mm
060.50A	6.5x50mm	060.80A	6.5x80mm	060.110A	6.5x110mm
060.55A	6.5x55mm	060.85A	6.5x85mm		





6.5mm CANCELLOUS SCREW 32mm THREAD

Code	Measure	Code	Measure	Code	Measure
061.45	6.5x45mm	061.70	6.5x70mm	061.95	6.5x95mm
061.50	6.5x50mm	061.75	6.5x75mm	061.100	6.5x100mm
061.55	6.5x55mm	061.80	6.5x80mm	061.105	6.5x105mm
061.60	6.5x60mm	061.85	6.5x85mm	061.110	6.5x110mm
061.65	6.5x65mm	061.90	6.5x90mm		



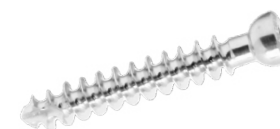
6.5mm CANCELLOUS SCREW 32mm THREAD SELF-TAPPING

Code	Measure	Code	Measure	Code	Measure
061.45A	6.5x45mm	061.70A	6.5x70mm	061.95A	6.5x95mm
061.50A	6.5x50mm	061.75A	6.5x75mm	061.100A	6.5x100mm
061.55A	6.5x55mm	061.80A	6.5x80mm	061.105A	6.5x105mm
061.60A	6.5x60mm	061.85A	6.5x85mm	061.110A	6.5x110mm
061.65A	6.5x65mm	061.90A	6.5x90mm		



6.5mm CANCELLOUS SCREW FULLY THREADED SELF-TAPPING

Code	Measure	Code	Measure	Code	Measure
062.30A	6.5x30mm	062.55A	6.5x55mm	062.80A	6.5x80mm
062.35A	6.5x35mm	062.60A	6.5x60mm	062.85A	6.5x85mm
062.40A	6.5x40mm	062.65A	6.5x65mm	062.90A	6.5x90mm
062.45A	6.5x45mm	062.70A	6.5x70mm	062.95A	6.5x95mm
062.50A	6.5x50mm	062.75A	6.5x75mm	062.100A	6.5x100mm



SS SCREWS

7.0mm CANNULATED SCREW 32mm THREAD

Code	Measure	Code	Measure	Code	Measure
053.40	7.0x40mm	053.65	7.0x65mm	053.90	7.0x90mm
053.45	7.0x45mm	053.70	7.0x70mm	053.95	7.0x95mm
053.50	7.0x50mm	053.75	7.0x75mm	053.100	7.0x100mm
053.55	7.0x55mm	053.80	7.0x80mm		
053.60	7.0x60mm	053.85	7.0x85mm		



CE DHS/DCS SLIDING SCREW

Code	Measure	Code	Measure	Code	Measure
026.50	50 mm	026.75	75 mm	026.100	100 mm
026.55	55 mm	026.80	80 mm	026.105	105 mm
026.60	60 mm	026.85	85 mm	026.110	110 mm(*)
026.65	65 mm	026.90	90 mm	026.115	115 mm(*)
026.70	70 mm	026.95	95 mm		(*) ON REQUEST



WASHER

Code	Measure
009.35	3.5 mm y 4.0 mm
009.45	4.5 mm y 6.5 mm



ALP SCREWS FOR LOCKING PLATE

CE 3.5mm ALP CORTEX LOCKING SCREW

Code	Measure	Code	Measure	Code	Measure
101.12	3.5x12mm	101.26	3.5x26mm	101.40	3.5x40mm
101.14	3.5x14mm	101.28	3.5x28mm	101.45	3.5x45mm
101.16	3.5x16mm	101.30	3.5x30mm	101.50	3.5x50mm
101.18	3.5x18mm	101.32	3.5x32mm	101.55	3.5x55mm
101.20	3.5x20mm	101.34	3.5x34mm	101.60	3.5x60mm
101.22	3.5x22mm	101.36	3.5x36mm		
101.24	3.5x24mm	101.38	3.5x38mm		



CE 3.5mm ALP CANCELLOUS LOCKING SCREW

Code	Measure	Code	Measure	Code	Measure
102.12	3.5x12mm	102.22	3.5x22mm	102.36	3.5x36mm
102.14	3.5x14mm	102.24	3.5x24mm	102.40	3.5x40mm
102.16	3.5x16mm	102.26	3.5x26mm	102.45	3.5x45mm
102.18	3.5x18mm	102.28	3.5x28mm	102.50	3.5x50mm
102.20	3.5x20mm	102.30	3.5x30mm		



**BONE NEEDLE, KIRSCHNER TYPE, NOT
THREADED WITH DRIVE POINT**

Code	Measure	Code	Measure
003.1110	1.1mm x100mm	003.2010	2.0mm x100mm
003.1115	1.1mm x150mm	003.2015	2.0mm x150mm
003.1120	1.1mm x200mm	003.2020	2.0mm x200mm
003.1125	1.1mm x250mm	003.2025	2.0mm x250mm
003.1130	1.1mm x300mm	003.2030	2.0mm x300mm
003.1135	1.1mm x350mm	003.2035	2.0mm x350mm
003.1140	1.1mm x400mm	003.2040	2.0mm x400mm
003.1145	1.1mm x450mm	003.2045	2.0mm x450mm
003.1610	1.6mm x100mm	003.2410	2.4mm x100mm
003.1615	1.6mm x150mm	003.2415	2.4mm x150mm
003.1620	1.6mm x200mm	003.2420	2.4mm x200mm
003.1625	1.6mm x250mm	003.2425	2.4mm x250mm
003.1630	1.6mm x300mm	003.2430	2.4mm x300mm
003.1635	1.6mm x350mm	003.2435	2.4mm x350mm
003.1640	1.6mm x400mm	003.2440	2.4mm x400mm
003.1645	1.6mm x450mm	003.2445	2.4mm x450mm

**BONE WIRE, THREADED TIP, KIRSCHNER TYPE**

Code	Measure	Code	Measure
005.1115	1.1mm x150mm thread 20mm	005.2015	2.0mm x150mm thread 20mm
005.1120	1.1mm x200mm thread 20mm	005.2020	2.0mm x200mm thread 20mm
005.1125	1.1mm x250mm thread 20mm	005.2025	2.0mm x250mm thread 20mm
005.1130	1.1mm x300mm thread 20mm	005.2030	2.0mm x300mm thread 20mm
005.1135	1.1mm x350mm thread 20mm	005.2032	2.0mm x320mm thread 20mm
		005.2035	2.0mm x350mm thread 20mm
005.1615	1.6mm x150mm thread 20mm		
005.1620	1.6mm x200mm thread 20mm	005.2415	2.4mm x150mm thread 20mm
005.1625	1.6mm x250mm thread 20mm	005.2420	2.4mm x200mm thread 20mm
005.1630	1.6mm x300mm thread 20mm	005.2425	2.4mm x250mm thread 20mm
005.1635	1.6mm x350mm thread 20mm	005.2430	2.4mm x300mm thread 20mm
		005.2432	2.4mm x320mm thread 20mm
		005.2435	2.4mm x350mm thread 20mm
005.161505	1.6mm x150mm thread 5mm		
005.162005	1.6mm x200mm thread 5mm		
005.162505	1.6mm x250mm thread 5mm		
005.163005	1.6mm x300mm thread 5mm		
005.163505	1.6mm x350mm thread 5mm		



WIRES / NAILS

WIRE FOR SOFT OSTEOSYNTHESIS, ROLL

Code	Measure
002.01	1.0x1m
002.03	1.0x3m
002.05	1.0x5m
001.01	1.2x1m
001.03	1.2x3m
001.05	1.2x5m



BONE NAIL, TRIANGULAR POINT, NOT THREADED, STEINMANN TYPE

Code	Measure
004.24	2.4mm x250mm
004.28	2.8mm x250mm
004.32	3.2mm x250mm
004.40	4.0mm x250mm
004.48	4.8mm x250mm

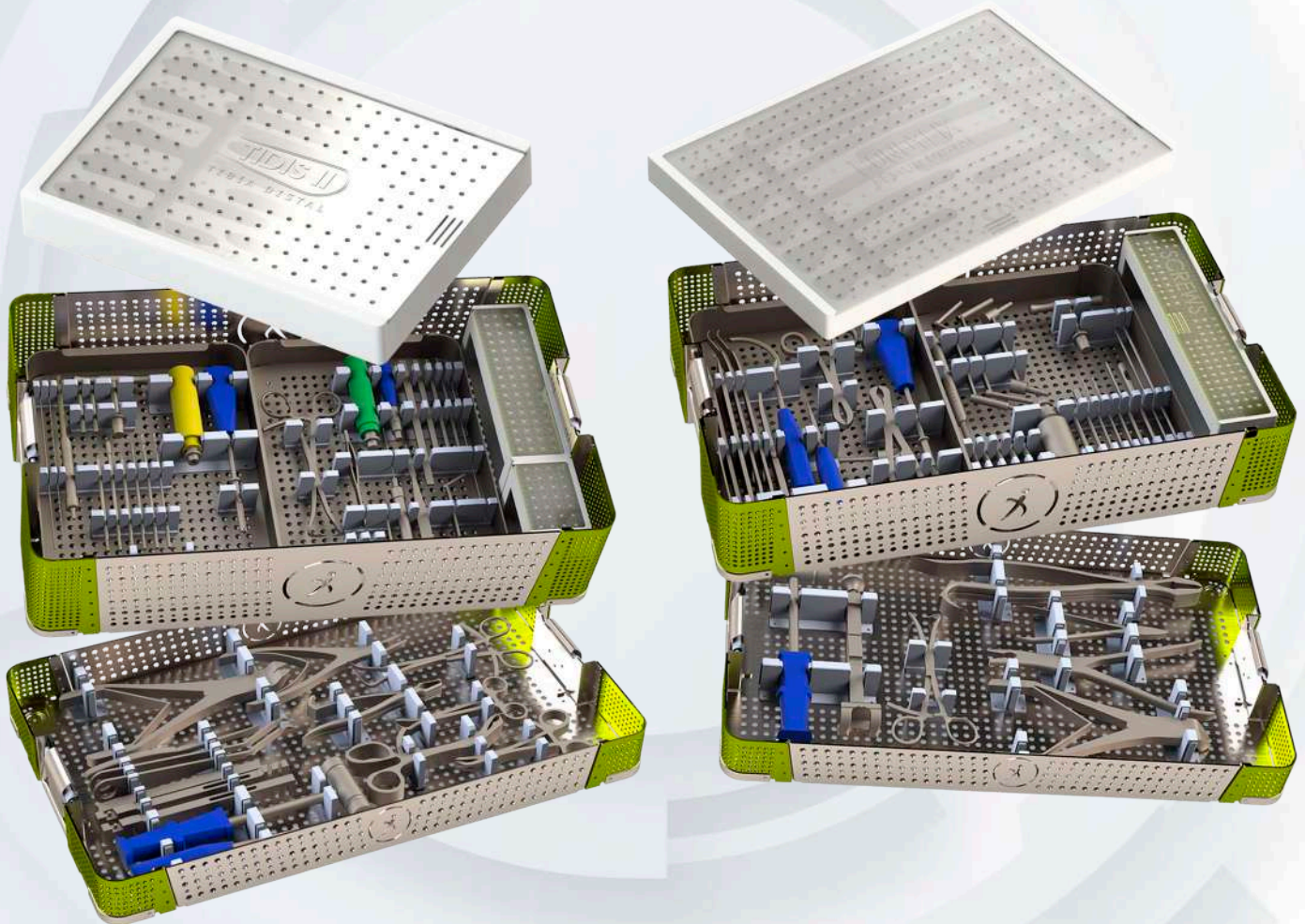


SCREW TYPE SCHANZ C €

Code	Measure
008.24	2.4mm schanz type screw 20mm fine thread
008.28	2.8mm schanz type screw 20mm thread
008.32	3.2mm schanz type screw 20mm thread
008.40	4.0mm schanz type screw 32mm thread
008.4027	4.0mm schanz type screw roughing 2.7mm
008.4032	4.0mm schanz type screw roughing 3.2mm
008.48	4.8mm schanz type screw
008.60	6.0mm schanz type screw



INSTRUMENTAL KIT

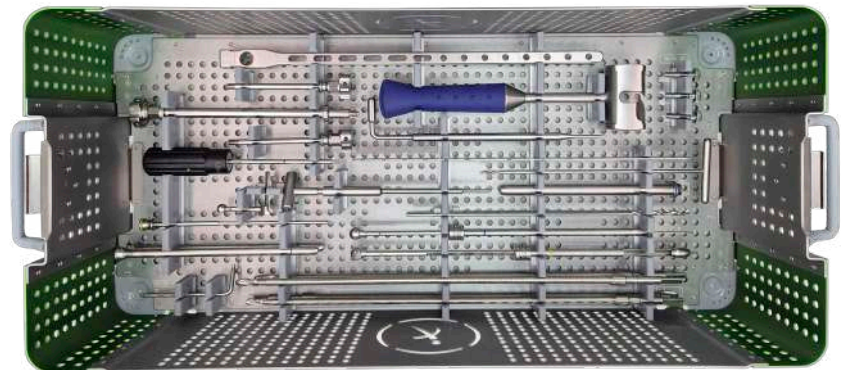
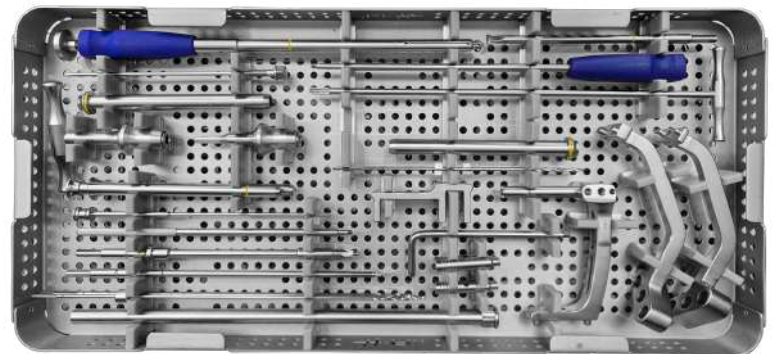
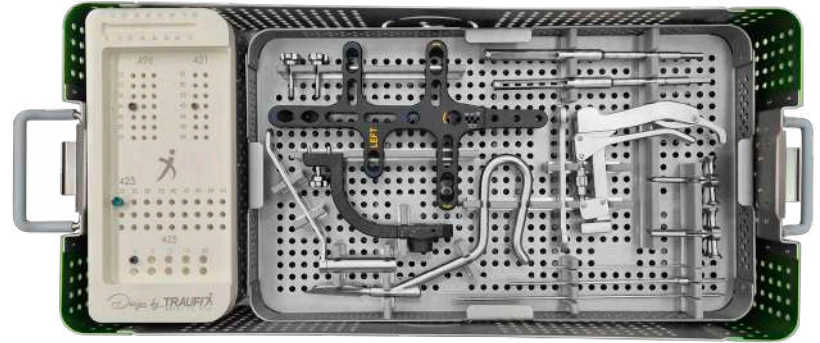


QTY. EQUIPMENT

- 2 Guide Wire \varnothing 2.5 x 250
- 2 Limited Guide Wire \varnothing 2.5 x 200
- 2 Guide Wire \varnothing 1.5 x 150
- 1 Simple guide \varnothing 11.5 x 70mm
- 1 Cannulated reamer \varnothing 11.5 x 60
- 1 Cannulated reamer \varnothing 10 x 60
- 1 Cannulated AWL \varnothing 3.5/ \varnothing 10
- 1 Guide wire clamping handle
- 1 Spanish key SW11
- 1 Proximal locking arm
- 1 Proximal locking guide
- 2 Connecting screw M6/SW5
- 3 Extension with T-handle \varnothing 5.8/ \varnothing 2.8 x 62

- 1 Cannulated reduction rod with T-handle, L: 33cm
- 1 Graduated rod 120-430
- 1 Cannulated T-handle \varnothing 8
- 1 Olive-tipped guide wire Nitinol free \varnothing 2.5 x 680mm
- 1 Olive-tipped guide wire (Nitinol alloy) \varnothing 2.5 x 680mm
- 1 Handle with quick coupling
- 2 Graduated drill bit with stop 0-60 \varnothing 3.8 mm
- 1 Graduated drill bit 0-60 \varnothing 3.8mm
- 1 Multilock screwdriver
- 1 Solid countersink \varnothing 8
- 2 Under shirt \varnothing 10/ \varnothing 3.8 x 162
- 2 Outer shirt \varnothing 13/ \varnothing 10 x 150
- 1 U-locking Guide
- 1 Compression screw M6/ \varnothing 3.2/SW11
- 1 Left distal locking arm/Right distal locking arm
- 1 Blockade for feeler distal
- 1 Allen wrench SW5
- 1 Screw extension SW3.5
- 1 Flat bit with triangular anchor
- 2 Nail extension \varnothing 10/ \varnothing 5.8
- 2 Graduated drill bit with stop 20-60 \varnothing 2.8
- 1 Long punch \varnothing 3.0
- 1 Screwdriver with tip in hexagon SW3.5
- 1 Hexagonal screwdriver T15
- 1 Screwdriver tip with triangular anchor SW3.5

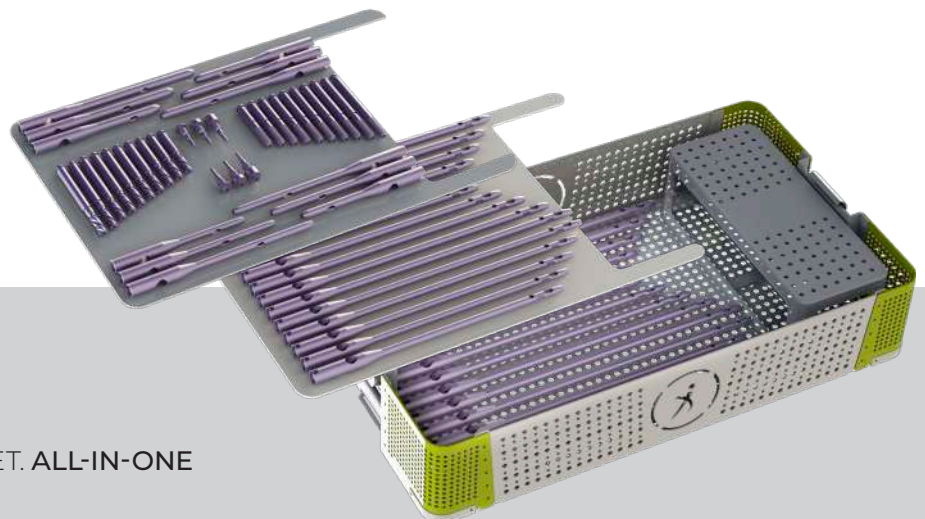
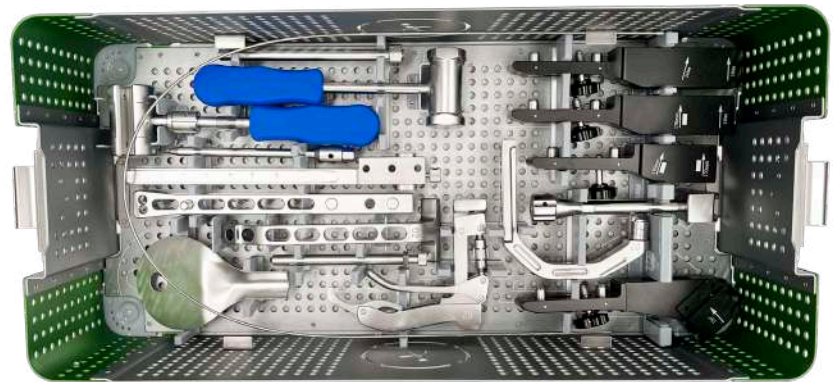
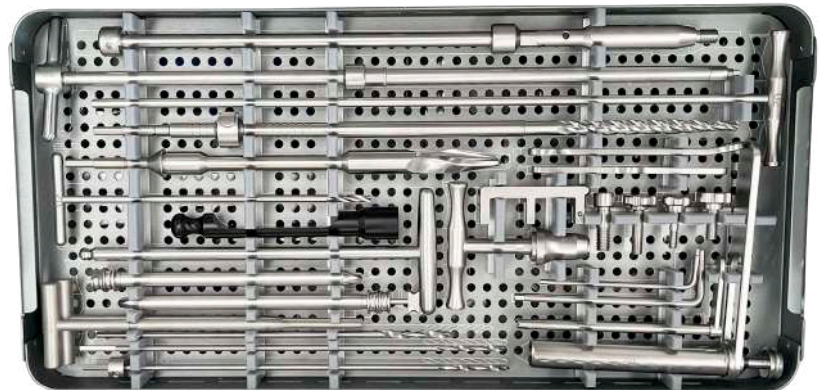
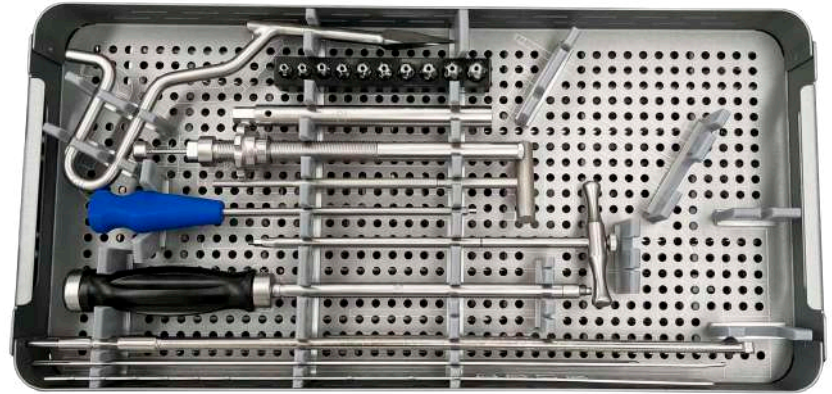
- 1 Graduated ruler \varnothing 7- \varnothing 9.5 x 160- 300
- 1 Flexible Shaft for rhyme tips \varnothing 7
- 1 Flexible Shaft for rhyme tips \varnothing 8
- 1 Flexible Shaft for rhyme tips \varnothing 9
- 1 Flexible Shaft for rhyme tips \varnothing 10
- 1 Depth gauge 0-90 mm
- 1 Long punch \varnothing 3.8
- 1 Sliding hammer
- 2 Long cannulated screw M6/ \varnothing 3.45/SW11
- 1 Connecting screw M6/ \varnothing 2.5/SW11
- 1 Power strip 200-300 Graduate
- 3 Compression screw M6/SW5
- 1 T-handle stylus
- 1 T-shank drill bit \varnothing 3.8
- 1 Punch with shirt
- 1 Temporary rod placement 0-10
- 1 Torx screwdriver 1.5 N.m
- 2 Outer shirt \varnothing 11/ \varnothing 8.2 x 175
- 2 Screw extension \varnothing 8.2/ \varnothing 3 x 187
- 2 Graduated drill bit 0-70 \varnothing 3.0
- 1 Graduated drill bit with stop 0-70 \varnothing 3.0
- 1 Allen wrench SW3.0
- 1 Depth gauge 0-90



ALL IN ONE KIT
INSTRUMENTATION AND IMPLANTS SET. ALL-IN-ONE

QTY. EQUIPMENT

- 1 Drill bit Ø 4.3 mm
- 1 Drill bit with stop Ø 4.3 mm
- 1 Reduction rod with cannulated T-handle
- 1 Key
- 1 Proximal cannulated reamer drill
- 1 Guide sleeve
- 1 Flat wrench SW11
- 1 Drill bit with T-handle Ø 5.2 mm
- 1 T-handle Position Rod
- 1 Depth gauge 70-120 mm
- 1 Quick coupling T-handle
- 1 Inner sleeve for drill bit Ø 5.2 mm
- 1 Inner sleeve with punch Ø 5.2 mm
- 1 Hexagonal screwdriver with T-handle Ø 8.0 mm
- 1 Proximal cannulated drill tip with stop 60-140 Ø11.2 mm
- 1 Nail extraction guide
- 1 Distal Position Lock
- 1 Hex Key Small SW 3.0
- 1 Hex Key Large SW 5.0
- 1 Blade screw device Ø4.5 mm
- 1 Nail holding bolt
- 1 Small bolt
- 1 Long bolt
- 1 Thick bolt
- 1 170-440 graduated ruler (Ø 9, Ø 10, Ø 11, Ø 12/130°).
- 4 Threaded tip guide wire
- 1 Reamer head base
- 1 Starter AWL
- 1 Cannulated screwdriver
- 1 Hexagonal screwdriver SW 3.5 mm
- 1 Sleeve guide
- 1 Saw Blade Screwdriver
- 1 Depth gauge 0-90 mm
- 1 Locking Plug guide
- 1 Flexible Reamer Bar Ø 8.0
- 1 Inner sleeve Ø 5.2 mm
- 1 Proximal Guider Device
- 1 Distal Guider device 240
- 1 Distal Guider device 90° 180/240
- 1 Distal Guider device 180
- 1 Main pin impactor
- 1 Tissue dilator
- 1 Connector
- 1 Cannulated screwdriver Ø 4.0 mm
- 1 U-shaped support for ruler
- 1 hammer
- 1 Solid hammer 500 grams
- 1 Distal locking ruler for long nails
- 1 Guider Wire Holder
- 1 Tissue Protection Plate
- 1 Distal ruler for long nail 320-440
- 1 Long Nail Distal Guider Bar
- 1 Olive Guide Wire
- 1 Cannulated reamer head
 Ø 9.0mm, Ø 9.5mm, Ø 10.0mm,
 Ø 10.5mm, Ø 11.0mm, Ø 11.5mm,
 Ø 12.0mm, Ø 12.5mm, Ø 13.0mm,
 Ø 13.5mm.



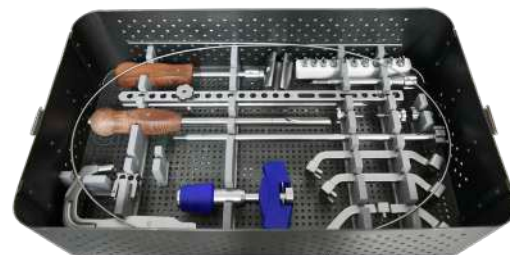
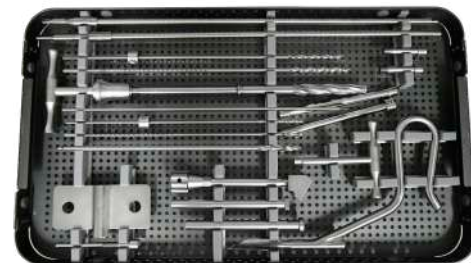
ALL IN ONE KIT

INSTRUMENTATION AND IMPLANTS SET. ALL-IN-ONE

QTY.	EQUIPMENT
1	Initiator punch
1	Universal puller
1	Allen key
1	Large allen key
1	Quick release T-handle
1	Guide Wire Gauge 120
1	Graduated drill with stop Ø 6.4
1	Depth gauge 115 mm
6	Guide Wire (3 Threaded / 3 Smooth Tips) 2.5 x 35cm
2	Nail Set Screw
1	U-lock strip
1	Guide Wire Positioner
1	Block for distal probe
2	Drill sleeve exterior Ø 8.0
1	Screwdriver for sliding screw Ø 6.5
1	Drill sleeve short Ø 8.0
1	Quick Release Hex Driver Bit for Nail clamping Ø 6.5
1	6.5 Bolt T-Handle Hex Driver
1	Stylus with T-handle
1	Short Tissue Dilator (Awl) Ø 8.0
1	T-handle drill bit Ø 5.0
1	Long Tissue Dilator (Awl) Ø 8.0
1	Drill sleeve interior Ø 2.5
1	Drill sleeve interior Ø 6.4
1	Drill sleeve interior Ø 4.3
1	Drill sleeve interior Ø 4.3
1	Drill sleeve interior Ø 5.2
1	Drill with stop 4.3 x 30cm
1	Drill Bit 4.3 x 30cm
1	T-Handle Hex Driver
1	Drill 5.2 x 25 cm
10	Rhying Tip Set Ø 8.5 Ø 9.0 Ø 9.5 Ø 10.0 Ø10.5 Ø 11.0 Ø11.5 Ø12.0 Ø12.5 Ø 13.0
1	Impactor / striker
3	Screw for strips
1	Probe / Distal Locking Devices
1	Tissue protector
1	Intramedular guide with T-handle
1	Flexible Rhyme
1	Starter Drill with Stop Ø13
1	Distal strip 180-240
1	Strip for proximal and subtrochanteric locking (Block to femoral head)
1	Distal strip 320-440
1	2.5 Olive Tip Guide Wire
1	Drill 6.3
1	Shirt 6.3
1	Guide without Olive
1	Distal locking device for strip
1	Screw for attachment
1	Special strip
1	Retrograde strip
1	Distal Locking Device
1	Guide wire with threaded tip Ø2.0mm lenght 320 mm
1	Containter / intrument box



QTY.	EQUIPMENT
1	T-handle for quick coupling
1	Cannulated Starter Drill Ø12.5
1	T-handle with hex blad Ø6.5
1	Initiator punch
2	Nail Extractor Connector
1	Compression screw
1	Drill Ø5.2
2	Graduated Drill Ø3.2
1	Graduated drill with cap Ø3.2
3	Threaded tip guide Ø3.0
2	Drill Ø4.0
1	Drill with cap Ø4.0
2	Flexible rhyme
2	Nail Fastener Screw
1	Tissue protector
1	Drill Guide Ø 12
1	Spanish key Ø 11
1	Lock tester
1	Big Allen Key Ø 5
1	Small Allen Key Ø 3
1	Rule
1	Key Ø4
1	Drill sleeve interior and exterior Ø 4 y Ø 8
1	Drill sleeve interior and exterior Ø 4 y Ø 8
1	Drill sleeve interior Ø 5.2
1	Tissue Dilator(Punch) Ø 8.0
1	Thin rope distal rail screw Ø 8.5 Ø 3.2 and Ø 3.2
1	Depth meter 90
1	Stylus with T-handle
1	T-handle drill bit Ø 5
1	Guide Wire Guard
1	Nail Holder for Extraction SW 3.5
1	Hex T-Handle Bolt Driver Ø 4.5
1	T-Handle Hex Driver Ø 6.5
1	AO Hex Bolt Driver Bit 4.5 SW3.5
1	Proximal locking device
1	Distal locking device
1	Distal Locking Device for Stylus
1	Nail Extraction Guide
2	Locating screw
1	Screw strip
1	Nail holder for extraction
1	Rhying Tips Set Ø 7.5 Ø 8.0 Ø 8.5 Ø 9.0 Ø 9.5 Ø 10 Ø 10.5 Ø 11 Ø 11.5 Ø 12
1	Guide Wire Handle
1	Blocking strip U shape
1	Insertion handle
1	Cannulated chisel
1	Sliding hammer
1	Drill sleeve Ø 4.0mm
1	Drill sleeve Ø 6.3mm
1	Distal locking device
1	Drill bit with AO anchor Ø 6.3mm x 250mm
1	Guide Wire 2.4 mm X 1000 mm for intramedular nail
1	Instrument box/ container



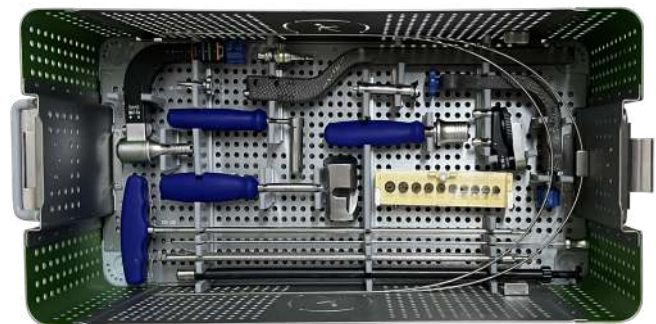
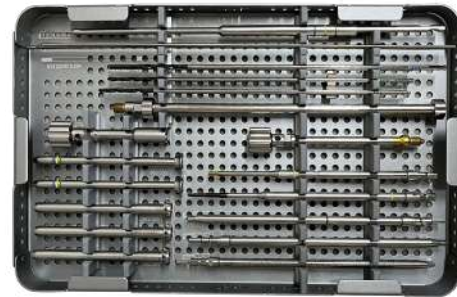
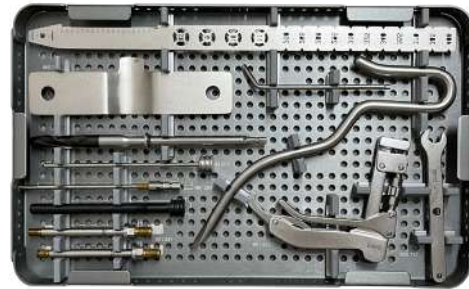
T- FIX SET | INTRAMEDULLARY NAIL FOR THE TIBIA

QYT. EQUIPMENT

- 1 Depth gauge $\varnothing 2.5 \times 1000$
- 2 Flexible wire guide $\varnothing 7.3 \times 420$
- 1 Wire guide
- 1 Punch $\varnothing 3.0$
- 1 Flexible reamer heads: $\varnothing 7.5, \varnothing 8.0, \varnothing 8.5, \varnothing 9.0, \varnothing 9.5, \varnothing 10.0, \varnothing 10.5, \varnothing 11.0, \varnothing 11.5$ y $\varnothing 12.0$.
- 1 Sliding hammer
- 1 Guide rod connector
- 1 Quick-release handle
- 1 Protective sleeve with handle $\varnothing 12.6$
- 1 Distal device (carbon fiber)
- 1 Screw lock for distal device M8
- 1 Guide wire sleeve $\varnothing 3.2 / \varnothing 12.5$
- 1 Distal guide (carbon fiber)
- 1 M5/SW4.5 locking screw
- 1 Semi-round connector
- 1 Short carbon fiber handle

- 1 Depth gauge
- 2 Guide pin $\varnothing 3.2 \times 400$
- 1 Threaded tip guide pin $\varnothing 3.2 \times 300$
- 1 Threaded tip guide pin $\varnothing 3.2 \times 400$
- 2 Drill bit $\varnothing 4.1 \times 300$
- 2 Indicator stop $\varnothing 4.1$
- 2 Drill bit $\varnothing 3.5$
- 2 Drill bit for positioning rod $\varnothing 3.5$
- 1 Hammer guide
- 1 M8x1/M10/SW11 adapter
- 1 Positioning rod $\varnothing 8.1$
- 1 Ring for positioning rod $\varnothing 8 / \varnothing 5$
- 1 Flexible hex screwdriver bit SW4.8/M2
- 2 Hex screwdriver bit SW4.8/M2
- 1 Adapter
- 2 Drill sleeve $\varnothing 8.1 / \varnothing 4.1$
- 2 Sleeve $\varnothing 10 / \varnothing 8.1$
- 1 Sleeve for positioning rod $\varnothing 10 / \varnothing 8.1$

- 1 Measuring ruler
- 1 Protective plate (Suprapatellar Kit item)
- 1 Screwdriver
- 1 Cannulated punch
- 1 Proximal cannulated drill bit $\varnothing 12.5 / \varnothing 3.2$
- 1 Punch $\varnothing 4.1$
- 1 Compression tool
- 1 Sleeve (Carbon fiber)
- 2 Short connecting screw M8x1/M10/M6/SW11
- 1 Allen wrench SW11
- 1 Guide wire clamping handle
- 2 Guide pin with spherical tip $\varnothing 2.5 / \varnothing 4.0 / 1000$



KIT INFRAPATELLAR

KIT SUPRAPATELLAR

- 1 Long carbon fiber handle
- 1 Long guide wire sleeve $\varnothing 3.2 / \varnothing 12.5$
- 1 Protective sleeve $\varnothing 12.5$
- 1 Sheath punch $\varnothing 12.5$
- 1 Silicone sheath NO.H57
- 1 Protective sheath handle
- 1 Long proximal cannulated drill bit $\varnothing 12.5 / \varnothing 3.2$
- 2 Long connecting screw M8x1/M10/M6/SW11
- 2 Long Tibial Nail Guide $\varnothing 7.3 \times 150$
- 1 Long compression tool
- 1 Protective plate (Item included in the Infrapatellar Instrument Kit)



ALL IN ONE KIT

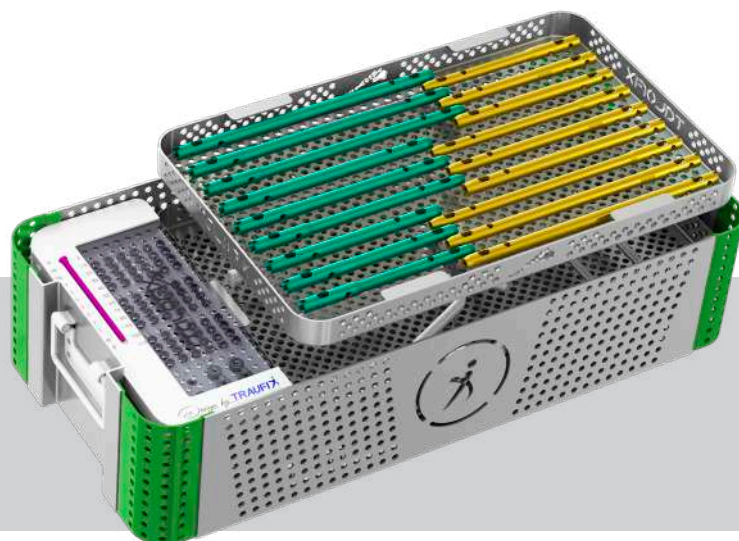
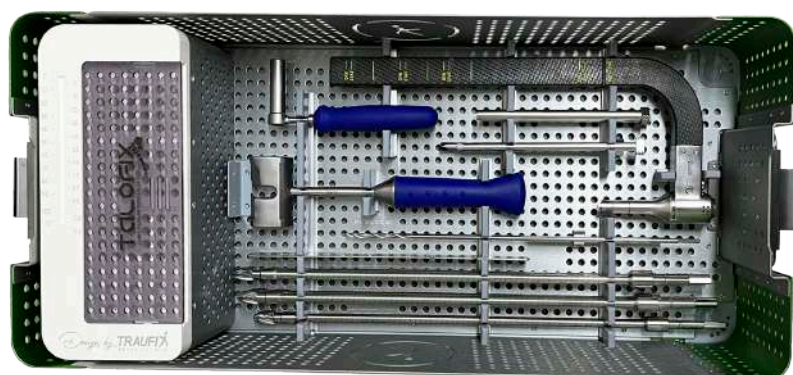
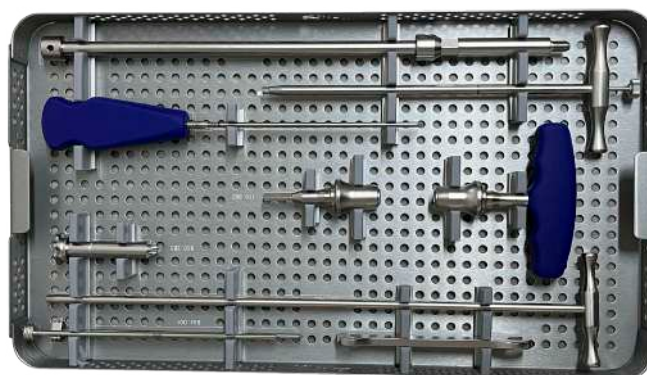
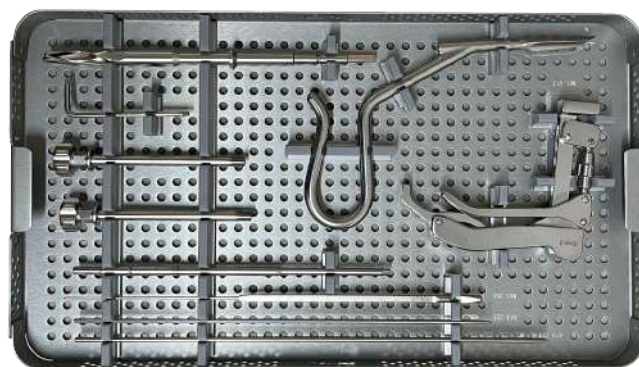
INSTRUMENTATION AND IMPLANTS SET. ALL-IN-ONE

QTY. EQUIPMENT

- 2 Guide wire with threaded tip \varnothing 3.2 x 343
- 2 Guide wire with threaded tip \varnothing 3.2 x 300
- 1 Depth gauge 0 – 110 mm
- 1 Hexagonal screwdriver tip SW 4.5 mm
- 2 Connection screw M8x1 / SW11
- 1 Allen wrench SW3.0 mm
- 1 Graduated proximal drill \varnothing 12.5 / \varnothing 3.2
- 1 Cannulated punch
- 1 Guide wire clamping handle
- 2 Guide wire with olive tip \varnothing 2.5 / \varnothing 4.0 / 680

- 1 Spanish key SW11
- 2 Punch \varnothing 4.0
- 1 Cannulated reduction rod with T-handle
- 1 Guide wire guide \varnothing 3.2 / \varnothing 12.5
- 1 Quick coupling T-handle
- 1 Adapter
- 1 Screwdriver with hexagonal tip SW3.5
- 1 Locking screwdriver with T-handle SW4.5/M3.0
- 1 Nail extraction guide M8x1 / \varnothing 10 / \varnothing 4.0

- 1 Carbon fiber handle
- 1 Sleeve protector with handle \varnothing 12.5
- 2 Outer sleeve \varnothing 10 / \varnothing 8.1 x 155
- 2 Inner sleeve \varnothing 4.0
- 1 Sliding Hammer
- 2 Drill bit \varnothing 4.0 x 300
- 1 Drill bit with stop \varnothing 4.0 / SW3.0
- 1 Template
- 1 Flexible shaft for rhyme tip
 \varnothing 9mm, \varnothing 10mm, \varnothing 11mm, \varnothing 12mm, \varnothing 13mm.



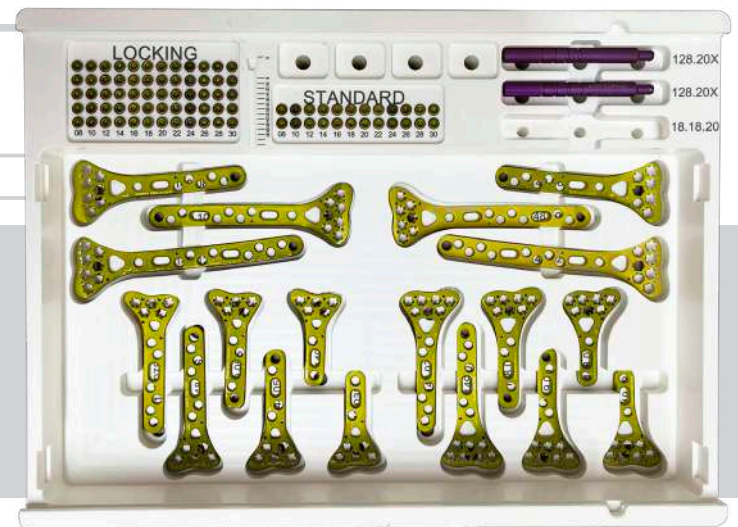
ALL IN ONE KIT

INSTRUMENTATION AND IMPLANTS SET. ALL-IN-ONE

ALP PLATE FOR DISTAL RADIUS

ITEM 369 - UPC 07506494265190

QTY.	EQUIPMENT
2	Drill 2.0mm
1	Straight Handle AO
1	Screwdriver Bit 2.5mm AO T8
1	Depth Gauge 50mm
1	2.0 / 2.7mm DCP Double Screw Guide
1	Adson Brown Forceps
1	Hohman Spacer Pair 6mm
1	Basic Instrumental Box Lionter plate



Our containers for implants and screws are manufactured with **TECAPRO MT (Heat Stabilized Polypropylene) PP Medical Grade**

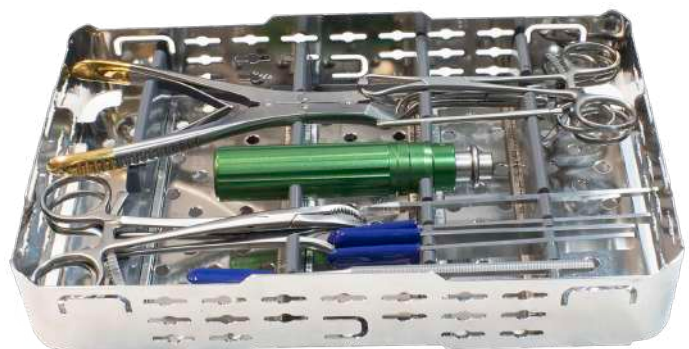
Ideal material for sterilization containers

FEATURES

- ▶ Heat stabilized
- ▶ Autoclave
- ▶ Biocompatible
- ▶ Good chemical resistance
- ▶ Hydrolysis and superheated steam resistant
- ▶ Low moisture absorption
- ▶ Good slice and wear properties (tribological)

SUPPORT INSTRUMENTS

QTY.	EQUIPMENT
1	T/C Wire Cutters, 16 cm
2	10 cm pointed reduction forceps
1	Bone forceps 13.5 cm
1	14.0 cm field-type reduction forceps
1	Stop-tip forceps 12.0 cm
1	Screwdriver tip with AO T8 anchor Ø 2.5 mm
1	AO torque handle 0.8 NM
1	Mini-Lambotte osteotome Ø 3x125 mm
1	Mini-Lambotte osteotome Ø 4x125 mm
1	Mini-Lambotte osteotome Ø 6x125mm
1	Mini-Lambotte osteotome Ø 8x125 mm
1	Spoon, Ø 2 mm
1	Instrument case

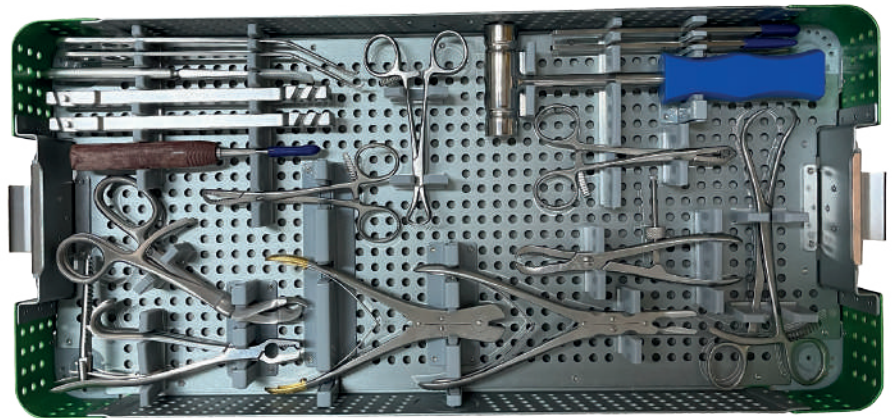
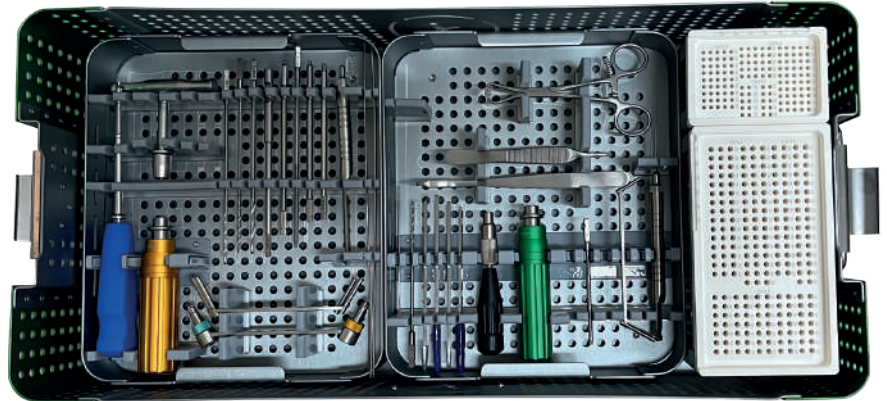


ALP SMALL FRAGMENTS SET

ITEM 371 - UPC 07506494265213

QTY. EQUIPMENT

- 2 Guide wire with threaded tip Ø1.1mm
- 2 Kirschner Wire Ø1.6mm
- 1 Depth gauge stainless steel Ø60mm
- 1 T-Handle with quick coupling (AO)
- 1 Handle with torque wrench AO anchor Ø1.5 NM
- 1 Screwdriver with hexagon tip for 3.5/4.0 w/holder screw Ø2.5mm
- 1 Eccentric neutral Drill guide Ø 2.5mm
- 2 Ø 2.5 / 3.5 Double Drill guide
- 1 Countersink tip Ø6mm
- 1 Hexagon screwdriver tip with AO anchor Ø2.5mm
- 1 Tap point Ø3.5mm
- 1 Screw extractor tip (with cone tip) Ø2.5mm
- 1 Drill bit with AO anchor Ø2.5 x 150mm
- 1 Drill bit with AO anchor Ø2.7 x 150mm
- 1 Drill bit with AO anchor Ø3.5 x 150mm
- 1 Reamer Tip (Punch) for Small Fragments Ø 6.5 mm
- 2 Drill guide / sleeve Ø2.7mm
- 1 Stop end clamp 120 cm
- 1 Handle with torque AO green 0.8 NM
- 1 Watchmaker handle with blue AO input 10cm
- 1 Osteotome mini-lamb Ø8 x 125mm
- 1 Osteotome mini-lamb Ø6 x 125mm
- 1 Osteotome mini-lamb Ø4 x 125mm
- 1 Osteotome mini-lamb Ø3 x 125mm
- 2 Kirschner Wire Ø1.1 X 100mm
- 1 Adson brown forceps 12.5cm
- 2 Hexagon screwdriver tip with AO T8 anchor Ø2.5mm
- 1 Lionter gauge 50mm
- 2 Mini-Hohmann spacer Ø 6mm
- 1 Ø 2.0/2.7mm Double Drill guide
- 2 Drill bit with AO anchor Ø2.0 x 125mm
- 2 Drill guide / sleeve (torx) Ø2.0 / 2.5mm

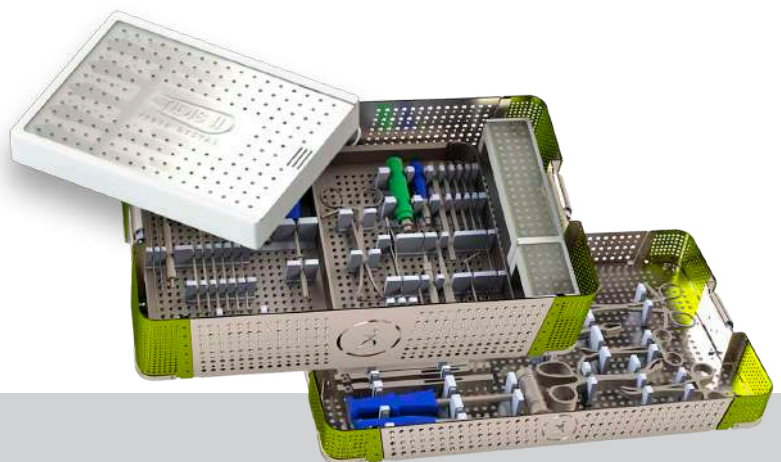


ALP SUPPORT EQUIPMENT FOR SMALL FRAGMENTS

ITEM 372 - UPC 07506494265220

QTY. EQUIPMENT

- 1 Volkman spoon 17cm
- 1 Hammer 200 G
- 1 Triscators for small fragments 19.5cm
- 1 Osteotomo mini lambotte 8mm
- 1 Osteotomo mini lambotte 12mm
- 1 Periosteal elevator 9 mm
- 2 Hohmann spacers (pair) 8/22
- 1 Kirschner cutter f/pin kirschner
- 1 Multitoothed tweezers
- 1 Gouge forceps 20 cm
- 1 Field type clamp 20cm
- 2 Kern Bone Holding Forceps 17cm
- 2 Field type clamp 13.5mm
- 2 Verbrugge clamp 17.5cm
- 2 14 cm multitoothed tweezers



MODULAR SYSTEM ALP | ALL IN ONE KIT

PLATES AND INSTRUMENTS IN ONE KIT | EASY & COMFORTABLE

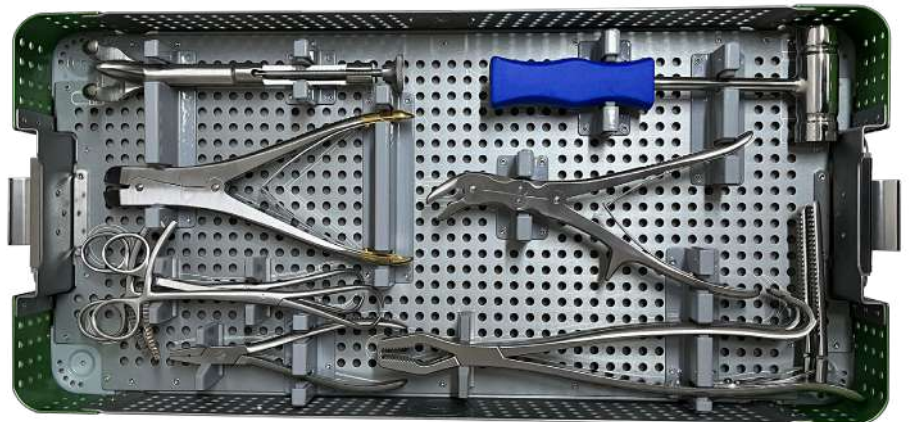
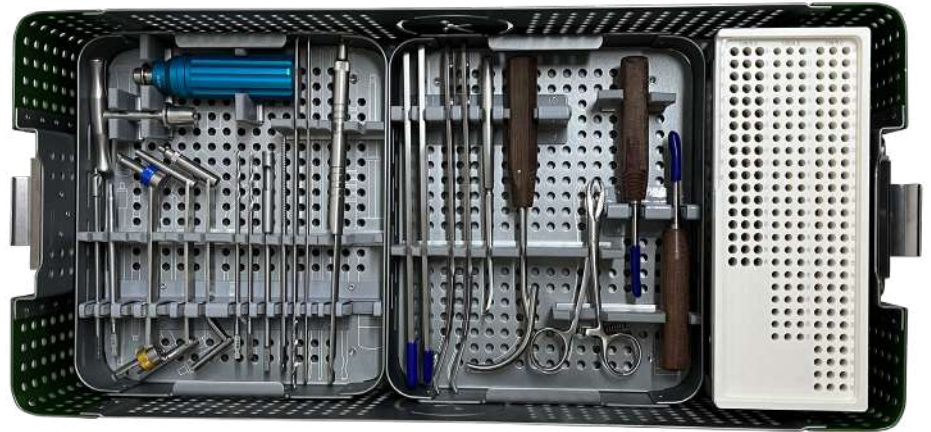
INSTRUMENTAL KIT

ALP LARGE FRAGMENTS SET

ITEM 373 - UPC 07506494265237

QTY. EQUIPMENT

- 1 Depth gauge stainless steel Ø10-90mm
- 1 Ø3.2/4.5mm Double Drill guide
- 1 Ø4.5/6.5mm Double Drill guide
- 1 Eccentric neutral Drill guide Ø 3.2mm
- 1 Screwdriver with hexagon tip for 3.5/4.0 w/holder screw Ø3.5mm
- 1 T-Handle with quick coupling (AO)
- 2 Kirschner Wire Ø2.0mm
- 2 Large Drill Ø3.2 x 250mm
- 1 Reamer Tip (Punch) for large fragments
- 1 Ø8.5mm reamer
- 1 Tap point Ø 4.5 mm
- 1 Hexagon screwdriver tip with AO anchor Ø3.5mm
- 1 Drill bit with AO anchor Ø3.2 x 150mm
- 1 Drill bit with AO anchor Ø3.5 x 150mm
- 1 Countersink tip Ø8mm
- 1 Handle with torque wrench AO anchor Ø4.0 NM
- 2 Drill guide / sleeve Ø3.2mm
- 2 Drill guide / sleeve Ø4.0mm
- 1 Toothed field type reduction clamp 14cm
- 1 Volkman spoon Num.10-17
- 1 Volkman spoon Num. 3-17
- 1 Ø70mm steel wire pass through
- 1 Periosteal elevator 15 mm
- 2 Hohmann spacer Ø22x250mm
- 1 Lambote Ø24 x 250mm
- 1 Lambote Ø24 x 150mm

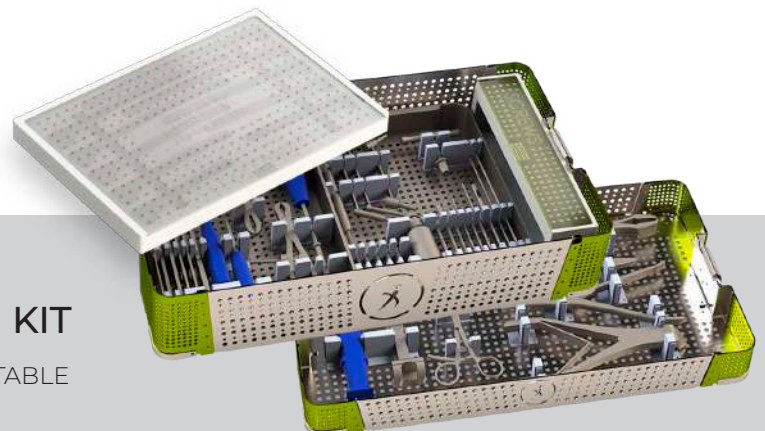


ALP SUPPORT EQUIPMENT FOR LARGE FRAGMENTS

ITEM 374 - UPC 07506494265244

QTY. EQUIPMENT

- 1 Solid hammer 300 grams
- 1 Lowman clamp 22cm
- 2 Field reduction clamp with guide 20.5 cm
- 2 Lane clamp with zipper 33cm
- 1 Wire bending pliers with groove 17cm
- 1 Leksell gouge forceps 24cm
- 1 Lateral wire cutter 23.5 cm



MODULAR SYSTEM ALP | ALL IN ONE KIT

PLATES AND INSTRUMENTS IN ONE KIT | EASY & COMFORTABLE

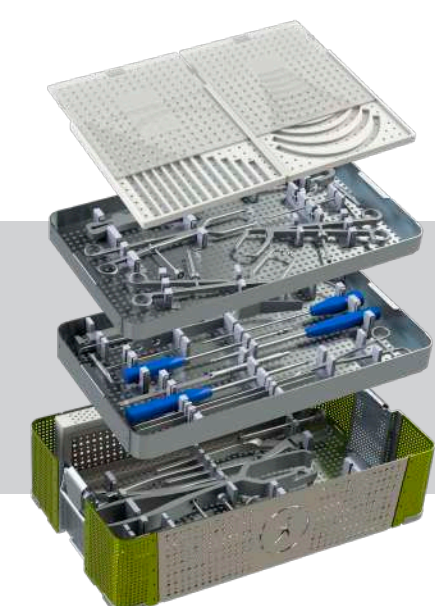
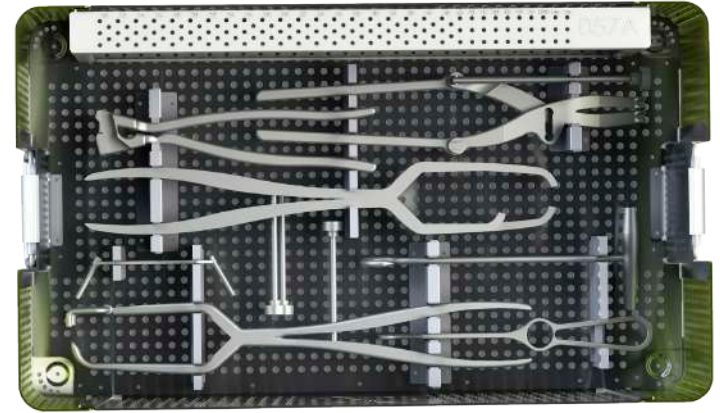
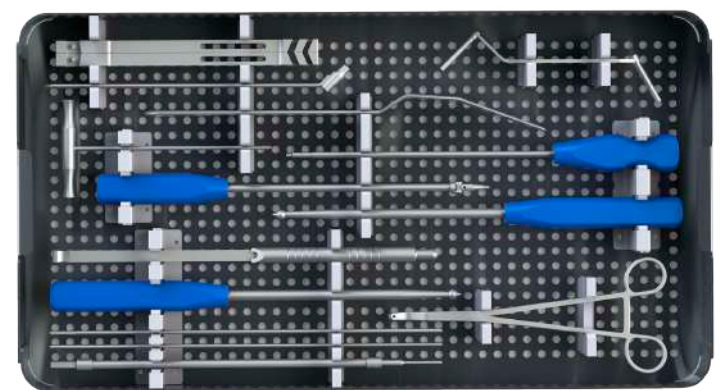
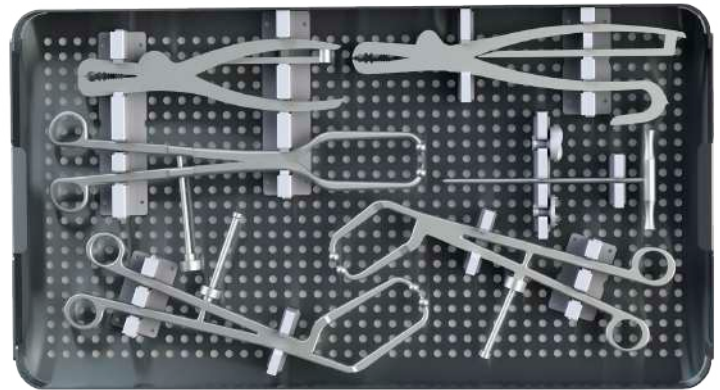
PELVIS AND ACETABULUM EQUIPMENT

QTY. EQUIPMENT

- 1 Spiked Disc, Round Curved
- 1 Spiked Disc, Round Flat
- 1 Tap with T handle, cancellous 4.0mm
- 1 Pelvic reduction forceps, angled, with pointed ball tips 6.5mm, length 240mm
- 1 Pelvic reduction forceps, angled, with pointed ball tips 6.5mm, length 200mm
- 1 Pelvic reduction forceps with pointed ball tips 6.5mm, length 250mm
- 1 Pelvic reduction forceps, small, length 190mm, for use with cortex screws 3.5 and 4.5mm
- 1 Pelvic reduction forceps, medium, length 250mm, for use with cortex screws 3.5 and 4.5mm

- 2 Ball Spike, straight, with pointed ball tips, length 300mm
- 1 Pelvic retractor, blunt
- 1 Double drill guide 2.5/3.5
- 1 Flexible drill bit 3.2
- 1 Drill guide Ø2.5 mm for flexible drill bit
- 1 Depth gauge 0-110mm
- 1 Tap with T handle, cortical 3.5
- 2 Bending iron for reconstruction plates 3.5 and 4.5, length 190mm
- 1 Screwdriver hexagonal, 2.5mm with screw holding sleeve, length 300mm
- 1 Screw holding sleeve Forceps 3.5 Ø2.5 mm
- 1 Screwdriver with universal joint, hexagonal, 2.5mm, length 300mm
- 5 Drill bit 2.5mm, length 250mm
- 2 Drill bit 3.0mm, length 250mm

- 1 Bending Iron forceps
- 1 Pelvic reduction forceps, asymmetric, with pointed ball tips 6.5mm
- 1 Universal drill guide 3.0/4.0
- 1 Bone hook, sharp, medium, length 230mm
- 1 Bone hook, sharp, large, length 200mm
- 1 Pelvic reduction forceps with pointed ball tips 6.5mm, length 400mm
- 1 Pelvic reduction forceps with 3 pointed ball tips 6.5mm, length 400mm
- 1 Pelvic reduction forceps, large, adjustable, speed lock, length 300mm
- 1 Bending template 3.5 reconstruction plates, straight
- 1 Bending template 3.5 reconstruction plates, curved
- 1 Bending pliers for reconstruction plates 3.5
- 1 Container



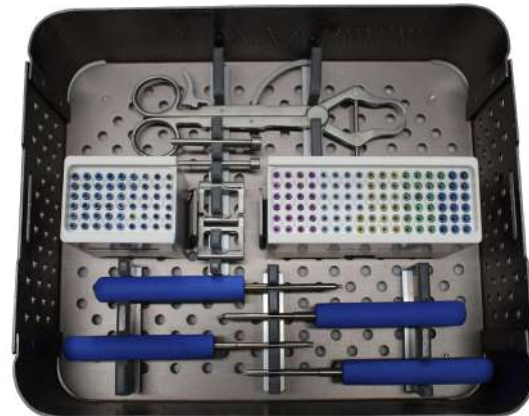
MODULAR SYSTEM | ALL IN ONE KIT

PLATES AND INSTRUMENTS IN ONE KIT | EASY & COMFORTABLE

INSTRUMENTAL KIT

HFS AND THS SCREW EQUIPMENT

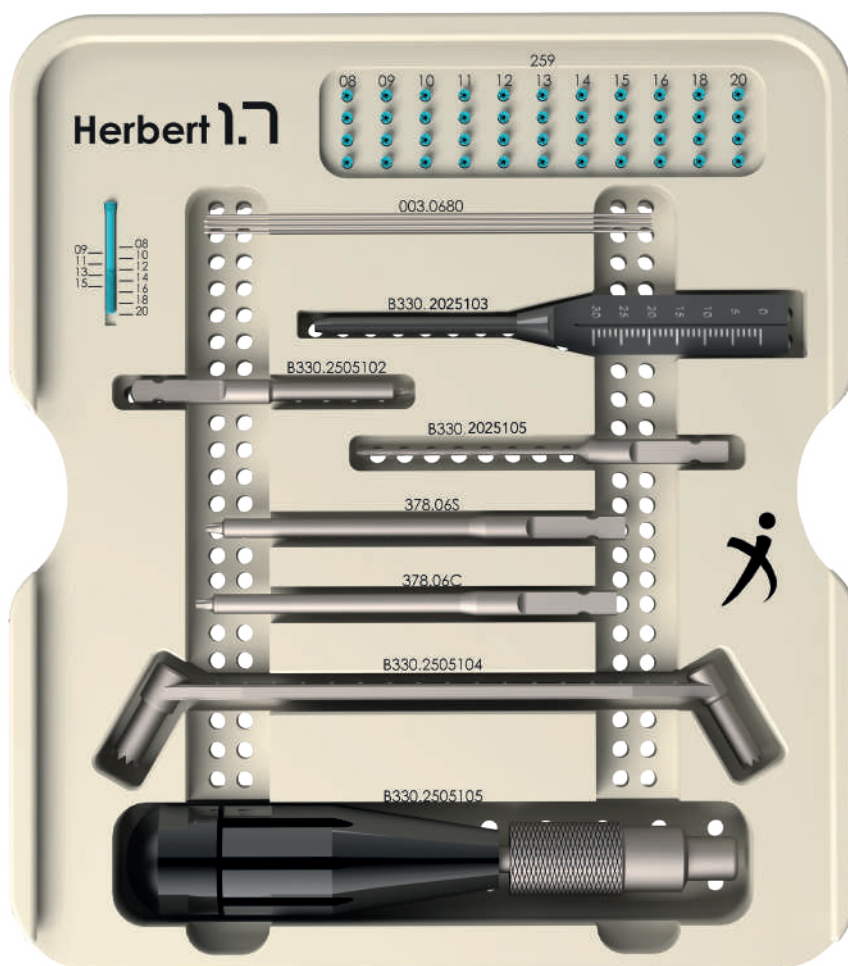
QTY.	EQUIPMENT
1	Kirchner 0.8mm x 120mm
1	Cannulated Drill with Stop
1	2.3 Solid Screwdriver
1	2.3 Cannulated Screwdriver
1	3.2 Solid Screwdriver
1	3.2 Cannulated Screwdriver
1	Tapered drill:
	3.5 for screw 2.5-3.5
	4.0 for screw 4.0
	4.5 for screw 4.5
	5.0 for screw 5.0
1	Kirchner Drill Guide Set, Drill Bit, Screwdriver
1	Measurer
1	Hook tip wire
1	Forceps with tips and adjustable guide (Guides for 1.8, 2.0 and 2.5)
1	Straight handle AO
1	Allen wrench



Herbert 1.7

QTY. EQUIPMENT

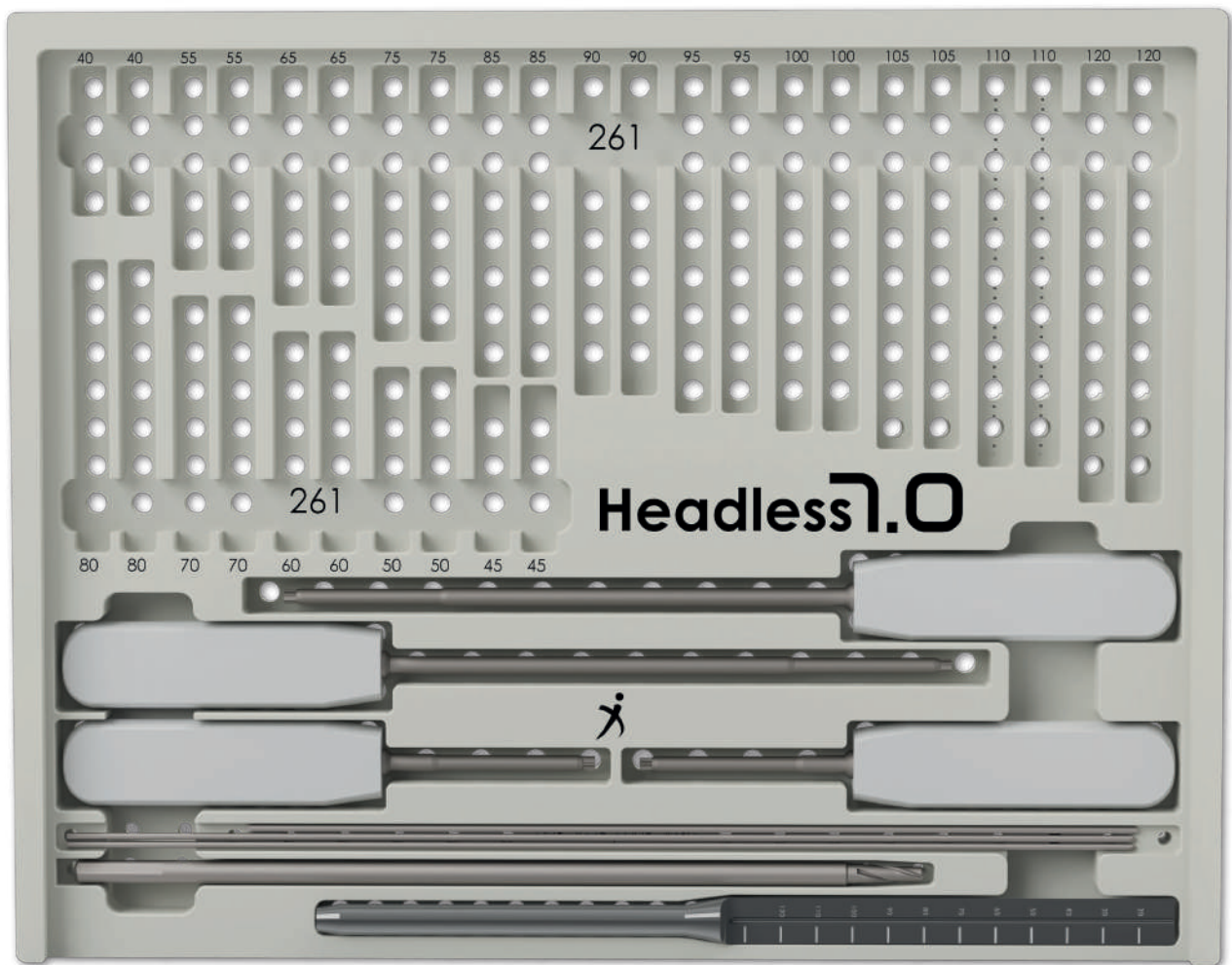
- 4 K-Wire, non-threaded with trocar tip, Ø0.6 mm x 80 mm
- 1 Handle with quick-release coupling
- 1 Countersink with quick-release coupling
- 1 Depth gauge 0.6 mm
- 1 Double guide 0.6/1.3 mm
- 1 1.3 mm drill bit with quick-release chuck
- 1 Torx 6 screwdriver
- 1 Torx 6 screwdriver with 0.7 mm cannula



Headless 1.0

QTY. EQUIPMENT

- 1 Guide Wire Gauge
- 1 Torx 20 screwdriver
- 1 Torx 20 screwdriver with 2.3 mm cannula
- 1 250 mm Torx 20 screwdriver.
- 1 250 mm Torx 20 screwdriver with 2.3 mm cannula
- 2 K-Wire, 2.0 mm diameter, 300 mm length, 20 mm thread
- 2 K-Wire, diameter 2.0 mm, length 250 mm, 20 mm thread
- 1 Tapered drill bit, diameter 5.0 mm

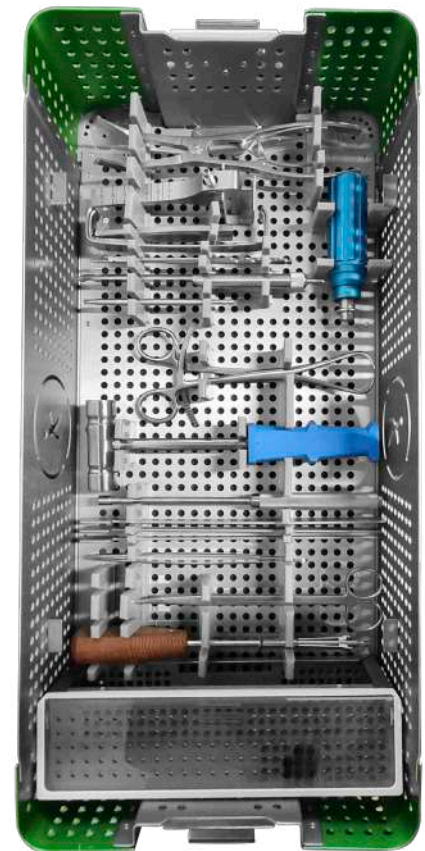


KIT DE INSTRUMENTAL

SPIDER HTO EQUIPMENT | HIGH TIBIAL OSTEOTOMY

QTY. EQUIPMENT

- 1 Farabeuf Separator 200X40X20mm (Pair)
- 1 Dissection Forceps 180 mm
- 1 Metzenbaum cutters
- 1 200 mm reduction clamps
- 1 Depth gauge 0-70 mm
- 1 Drill bit with AO anchor Ø3.2 mm
- 1 Screwdriver with hexagon tip for 4.5/6.5 w/holder screw Ø3.5mm
- 1 Hexagon screwdriver tip with AO anchor Ø3.5mm
- 1 Handle with torque wrench AO anchor Ø4.0 NM
- 1 Opening forceps, opens from 6 to 16 mm and approx. in length 30 mm. +/- 10 mm
- 1 Aperture Gauge 130 mm
- 1 Aperture Gauge 120 mm
- 1 Tap point Ø 4.5 mm
- 1 Bone Impactor Ø 8.0 mm
- 1 Solid hammer 300 grams
- 1 Cutting guide for right osteotomy HTO
- 1 Cutting guide for left osteotomy HTO
- 1 Lambote Ø08 x 250mm
- 1 Lambote Ø16 x 150mm
- 1 Lambote Ø25x 150mm
- 1 Drill guide / sleeve Ø3.2mm



TARFIX

CANULATED SUBTALAR SCREW FOR CORRECTION OF FLAT FOOT VALGUS



QTY. EQUIPMENT

- 1 Tarfix screw removal tool.
- 1 Crosshead screwdriver for inserting Tarfix screws.
- 1 Blunt-tipped guide wire, diameter 2.0 mm, length 265 mm.
- 1 Tarfix screw tester, sizes 8 mm, 9 mm, 10 mm, 11 mm, 12 mm, 13 mm, and 14 mm.

SMALL FRAGMENT SET

QTY.	EQUIPMENT
2	19 cm long self-centering clamp
1	Periosteal elevator 9 mm
1	Periosteal elevator 12 mm
1 Par	Small Fragment Setters DCP / Rebuilding 17 cm
1	Depth gauge, stainless steel, 60 mm
1	2.5 screwdriver for 3.5 / 4.0 screw
1	18 cm Medium field type clamp
1	16 cm multitoothed tweezers
1	3.5mm T-Handle Tap
1	4.0mm T-Handle Tap
1	2.5 Drill without quick coupling 11 cm
1	3.2 Drill without without quick coupling 11 cm
1	Countersink 3.5/4.0
1	Swept Screw Extractor for 3.5 Screw
1	Double Drill Guide 2.7/4.0
1	Double Drill Guide 2.5/3.5
1	Eccentric Neutral Guide 2.5



IMPLANTS

QTY.	EQUIPMENT
90	Screws 3.5 / 4.0 cortical screws 3.5
84	Screws 3.5 / 4.0 Cancellous Screws 4.0
3	Forearm plates
3	Rebuilding plates
3	1/3 cane plates
1	Plates in "T" for radio



INSTRUMENTAL KIT

LARGE FRAGMENTS SET

QTY.	EQUIPMENT
2	Self-centering pliers 26 mm long
1	Periosteal elevator 9 mm
1	Periosteal elevator 15 mm
1Par	Setters for large fragments
1	Depth gauge, stainless steel 80 mm
1	3.5 screwdriver for 4.5 / 6.5 screw
1	19 mm medium field type forceps
1	22 cm multi-toothed forceps
1	4.5mm T-Handle Tap
1	6.5 T-Handle Tap
1	3.2 drill bit without 15 cm quick coupling
1	Drill Bit 4.5 without Quick Coupling 15 cm
1	Countersink 4.5 / 6.5
1	Swept screw extractor for 4.5 screw
1	Double Drill Guide 4.5 / 6.5
1	Eccentric neutral guide 3.2



DHS/DCS EQUIPMENT

QTY.	EQUIPMENT
2	3.5 / 6.5 hexagonal screwdriver for 4.5 / 6.5 screw
1	Slide screw tap
1	Screwdriver for sliding screw
1	Impactor for DHS / DCS plates
1	Cannulated Triple Drill Bit
1	Triple drill for DHS
1	Hook Tip Guide
1	2.4 threaded tip guide
1	Depth meter
1	Guide meter
2	Fixed guides 135° and 95°
1	Double Drill Guide 4.5 / 6.5
1	Double Drill Guide 3.2 / 4.5
1	Eccentric neutral guide 3.2
1	Drill 3.2 without quick coupling
1	Drill Bit 4.5 without Quick Coupling
1	T-handle tap 4.5 and 6.5
2	Handle for DHS / DCS fixed guide
1	DHS / DCS instrument box w / rack



IMPLANTS

QTY.	EQUIPMENT
5	Slidding screw
5	DHS / DCS tube plate (can be changed) is suggested; 3 DHS and 2 DCS

CANNULATED EQUIPMENT 4.0

QTY.	EQUIPMENT
1	Cannulated screwdriver 2.5 p / screw 4.0 mm
1	Cannulated 2.7 graduated drill with stop
1	Depth Gauge P / Guide Wire
1	4.0mm T-Handle Cannulated Countersink
1	1.1 mm threaded tip guide
1	4.0mm T-Handle Cannulated Tap
1	Drill Guide w / punch, for cannulated Screw 4.0 mm



QTY.	EQUIPMENT
10	Screws 4.0 cannulated partial thread of the measure that the client chooses.
5	Washers



CANNULATED EQUIPMENT 7.0

QTY.	EQUIPMENT
1	Guide Wire Gauge
1	Hook Tip Guide
1	Countersink 7.0
1	Cannulated screwdriver 4.0 for screw
1	Cannulated tap 7.0
1	Cannulated Drill 5.0
1	Threaded Tip Guide 2.0
1	Multi-guide
1	Parallel guide w / clamping screw
1	Drill guide w/punch for cannulated screw 7.0
1	Contains: Sleeve interior for guide wire Drill sleeve exterior 5.0 Initiator punch



IMPLANTS

QTY.	EQUIPMENT
10	Screws 7.0 cannulated partial thread of the size that the client chooses
5	Washers

TRAUFIX

READY TO RUN



Accurate
in every detail



ABOUT US | SCAN ME

TRAUFIX

internationalsales@fixier.com.mx
(+52) 55 8106 3240

Dipromedic CDMX

ventas@dipromedic.com
(55) 9000 4888/ 89/ 90/ 91

Dipromedic Peru

ventas.interdipro.peru@dipromedic.com
gustavo.dominguez@dipromedic.com
(+51) 947 732 069

RUN WITH US

www.traufix.com

